

TABLE OF CONTENTS

- Pictorial Index
- General Information
- Floor Sink Selection Factors
 - Load Rating
 - Material & Characteristics
 - Pipe Connection
 - Commonly Specified Options
 - Option Configurations
- Typical Installations



PICTORIAL INDEX



FS-500
12" Square x 6" Deep PVC



FS-730
12" Square x 6" Deep



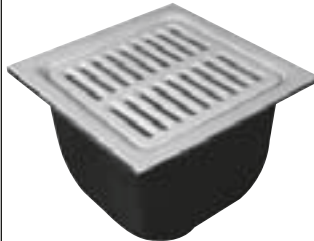
FS-770
4"X8" Rectangular X 4" Deep



FS-850
16" Square x 12" Deep



FS-700
8" Round x 3"
Deep Sanitary Floor Sink



FS-740
12" Square x 8" Deep



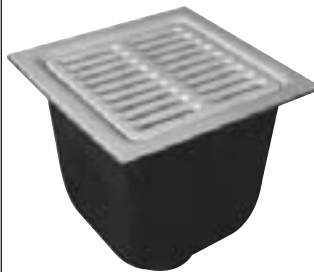
FS-780
12" Square x 6" Deep
Stainless Steel



FS-890
Water Supply Control Box



FS-710
8" Square x 6" Deep



FS-750
12" Square x 10" Deep



FS-790
12" Square x 8" Deep
Stainless Steel



FS-900
12"x 24"x17" Deep



FS-720
8" Round x 6" Deep



FS-760
12" Round x 8" Deep



FS-800
Can Wash Sink



SANITARY FLOOR SINKS

GENERAL INFORMATION

Watts Sanitary Floor Sinks are specified for indirect waste reception, generally in food preparation and clinical applications. Sanitary floor sinks are characterized by a smooth porcelain enamel coated, or stainless steel, interior surface and grate. Rounded corners on the inside and top rim of the sink eliminate areas where pockets of waste and bacteria might otherwise accumulate.

Watts FS-800 Can Wash Sinks feature a spray nozzle, and are used to flush the interior of waste receptacles. A built-in perforated stainless steel bucket catches debris.

FLOOR SINK SELECTION FACTORS

Load Rating

Floor sinks are not designed for traffic, and generally should not be specified in areas where foot or other traffic is anticipated.

Material & Characteristics

Porcelain Enameled Cast Iron - White, glasslike, inorganic coating common in sanitary plumbing applications. Corrosion proof, easy to clean, and in compliance with strict sanitation standards.

Stainless Steel - 14 gauge, in accordance with ASTM A-351-Grade CF8 (type 304) Standard Specification. Highly durable and resistant to corrosion.

Anti-Splash Dome Strainer - Furnished with all floor sinks, minimizes backsplash and keeps outlet from becoming clogged with debris.

Pipe Connection

No Hub (Standard) - Butt connection using no hub or neoprene coupling, suitable for cast iron, plastic, and most other piping applications.

Push-On (P) - Gasket connection ASTM C-564, with pipe stop. Suitable for no hub or service weight cast iron, Sch. 40 plastic, and steel pipe. Recommended for below grade use only.

Inside Caulk (X) - Caulk ring on drain outlet, pipe is inserted and joint sealed with lead & oakum.

FLOOR SINK SELECTION FACTORS

Commonly Specified Options

Flange with Weepholes (-F) - Directs water seeping around outside of flange back into sink (double drainage). Also functions to anchor sink, particularly in above grade applications.

Flange with Weepholes & Flashing Clamp (-FC) - Flashing clamp attaches and secures waterproofing membrane or liner, particularly in above grade applications.

Nickel Bronze Rim & Grate (-1) - For porcelain enamel coated sinks.

Stainless Steel Rim & Grate (-3) - For porcelain enamel coated sinks.

Sediment Bucket (-5) - Standard polypropylene (stainless steel with FS-780 & FS-790 Series), replaces dome strainer to collect solids.

Vandal Proof (-6) - Allen head screws regularly furnished, torx & pin may be specified for high security applications.

Trap Primer Tapping (-7) - 1/2" tapping on drain body, connects to trap primer valve (see Watts #A-200).

Secondary Strainer (-21) - Fits in base of drain sump, secondary protection against debris that bypasses sediment bucket.

Less Grate (-22) - Grate removed for indirect waste reception.

Grate with 2-1/2" Center Opening (-128) - For indirect waste line.

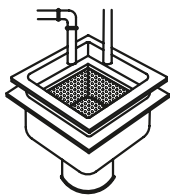
1/2 Grate (-150) - Commonly specified under refrigeration cases, receives indirect waste from back side of case, while grate covers exposed area.

3/4 Grate (-175) - For indirect waste line.

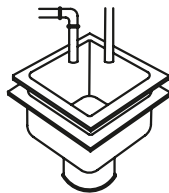
Round Funnel (-F4-1) - 4" round nickel bronze, accepts single condensate line. Specify 6" round nickel bronze (-F6-1) for large condensate lines. Bolt attaches funnel through underside of grate.

Oval Funnel (G-1) - 4x9" oval nickel bronze, accepts multiple condensate lines. Bolt attaches funnel through underside of grate.

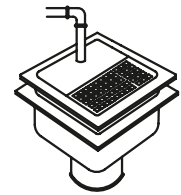
Option Configurations



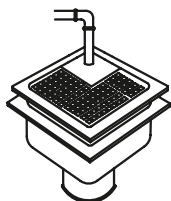
-5 Sediment Bucket



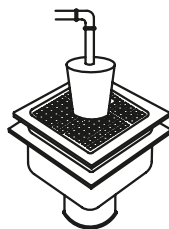
-22 Less Grate



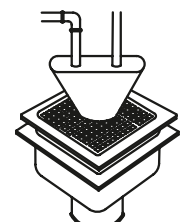
-150 1/2 Grate



-175 3/4 Grate

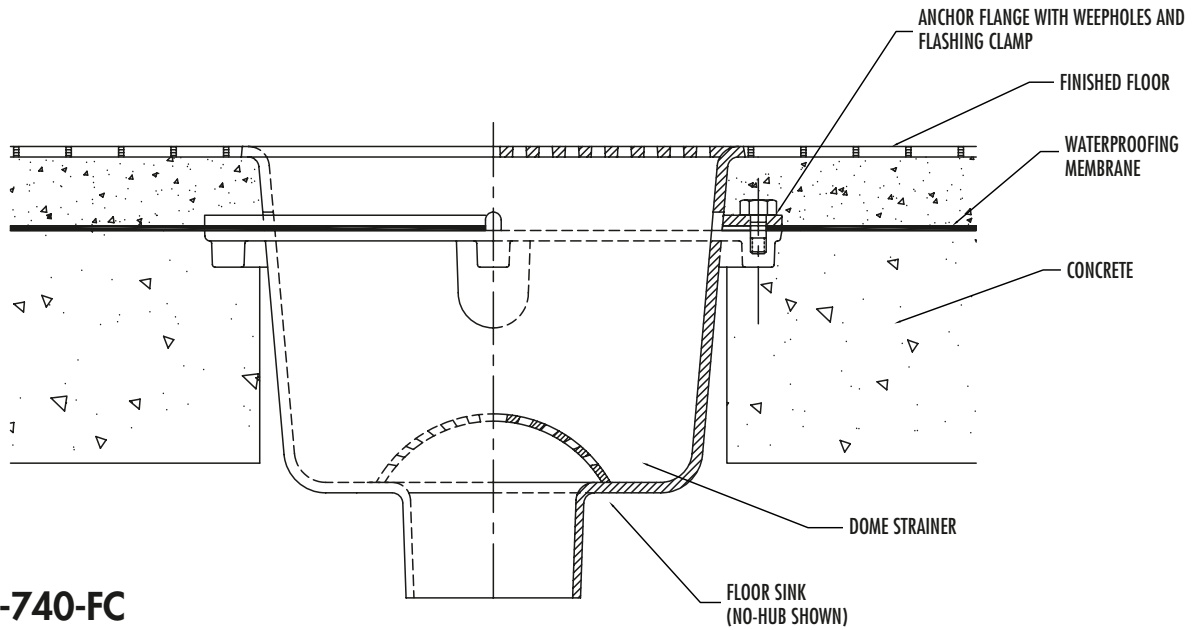


-F4-1 NB Round Funnel

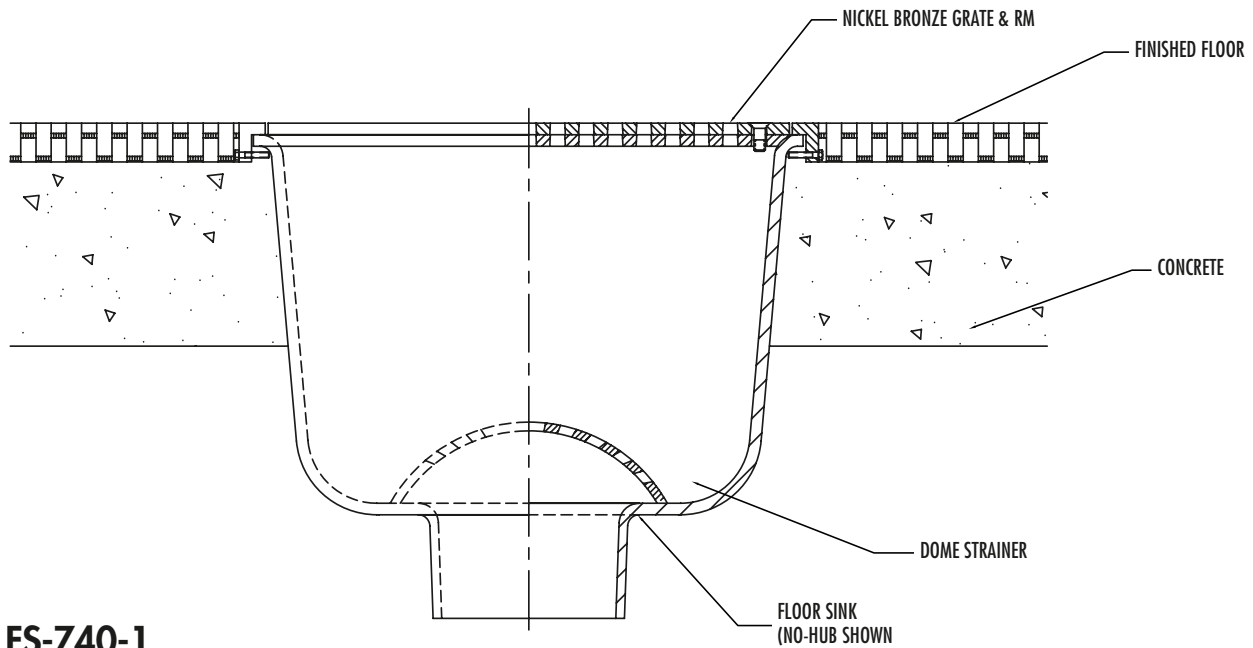


-G-1 NB Oval Funnel

TYPICAL INSTALLATIONS



FS-740-FC



FS-740-1