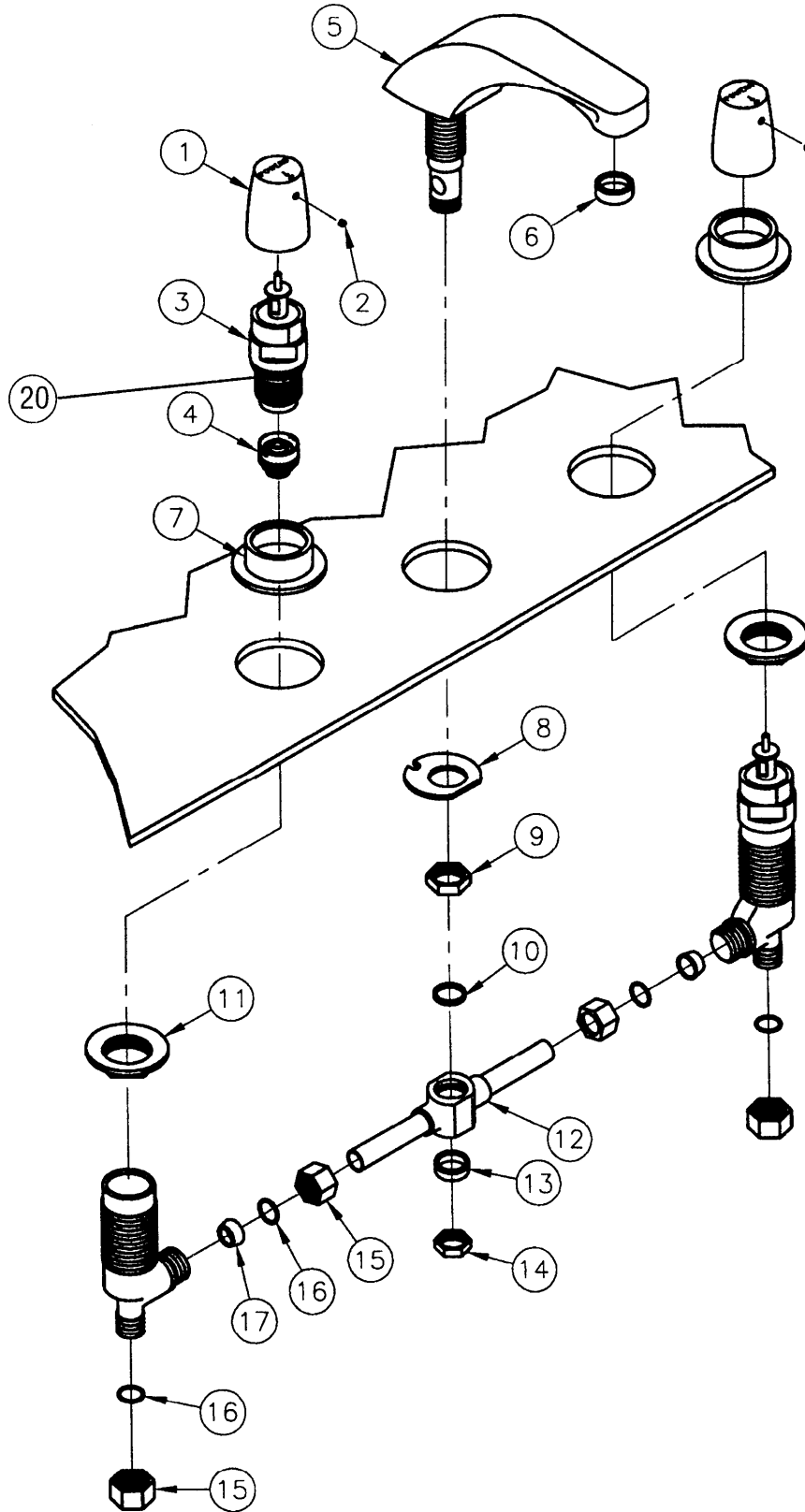


RESIDENTIAL LAVATORY FITTINGS P1405



8" WIDESPREAD METERING FAUCET

| ITEM | DESCRIPTION | ORDER CODE | QUANTITY |
|------|----------------------------|------------|----------|
| 1 | Handle | See Kit | — |
| 2 | Handle Button | See Kit | — |
| 3 | Cartridge | See Kit | — |
| 4 | Diaphragm/Filter | 675-028 | 1 |
| 5 | Spout with Shank & Aerator | 361157 | 1 |
| 6 | Aerator | 300911 | 1 |
| 7 | Flange | 675-034 | 1 |
| 8 | Washer | See Kit | — |
| 9 | Locknut | See Kit | — |
| 10 | “O”- Ring | See Kit | — |
| 11 | Locknut | See Kit | — |
| 12 | Tee & Supply Tubes | 356500 | 1 |
| 13 | “O”- Ring | See Kit | — |
| 14 | Locknut | See Kit | — |
| 15 | Union Nut | See Kit | — |
| 16 | Friction Ring | See Kit | — |
| 17 | Cone Washer | See Kit | — |
| 18 | Valve Body | N/A | — |
| 19 | Filter Wrench (not shown) | 675035BP | 5 |
| 20 | “O”- Ring | 675-030 | 10 |

REPAIR KITS

| ITEM | DESCRIPTION | ORDER CODE | INCLUDED ITEMS AND QUANTITY |
|------|----------------------|------------|---|
| 1 | Handle Kit | 675-026 | 1 (Qty: 1), 2 (Qty: 1 each Red & Blue) |
| 2 | Handle Button Kit | 675-032 | 2 (Qty: 10 each Red & Blue) |
| 3 | Cartridge/Handle Kit | 675-031 | 1, 2, 3, 4, 20 (Qty: 1 each) |
| 4 | Hardware Kit | 039283 | 8, 9, 10, 11, 13, 14, 15, 16 & 17 (Qty: Misc) |
| 5 | Cartridge Kit | 675-036 | 3, 4 & 20 (Qty: 1 each) |

POWERS™
a division of Watts Water Technologies, Inc.

© 2005 Powers, a division of Watts Water Technologies, Inc.
USA Phone: 1.800.669.5430 • Fax 1.847.824.0627
Canada Phone: 1.888.208.8927 • Fax 1.888.882.1979
www.powerscontrols.com