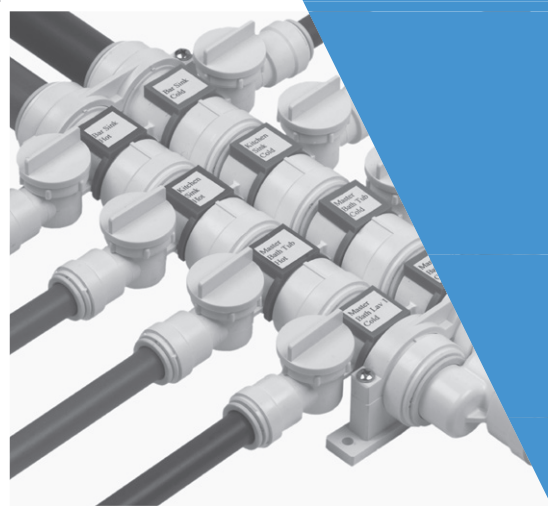
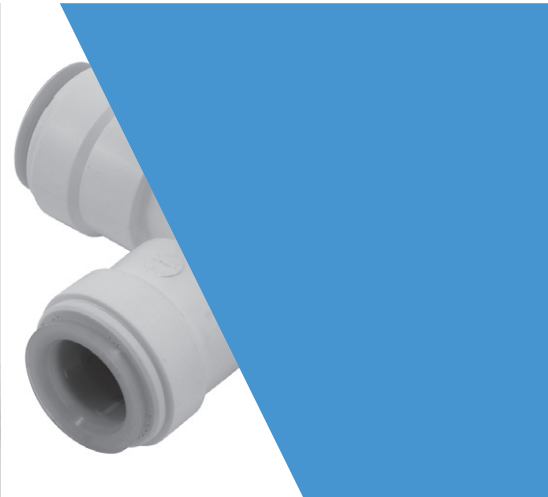
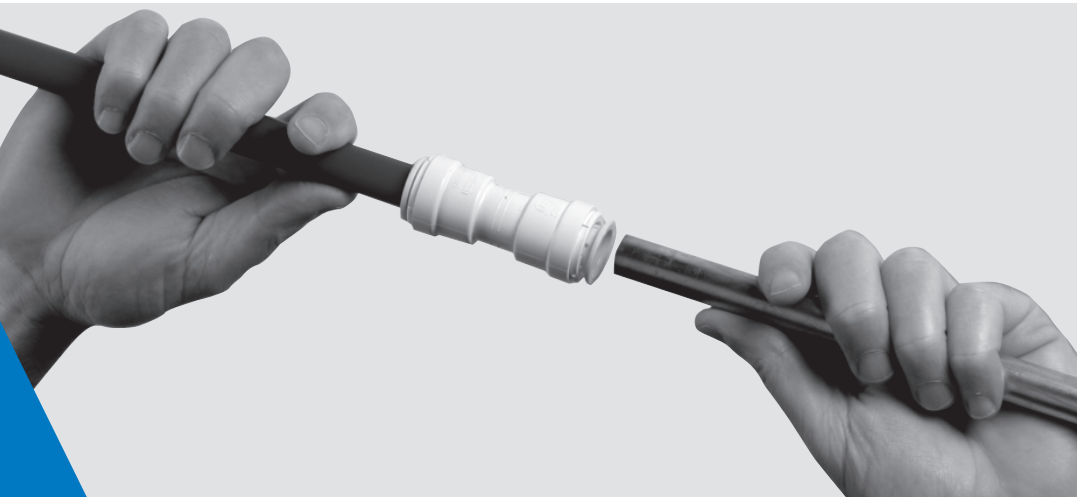


Price List

Quick-Connect Plumbing Products



Effective October 8, 2018

All prices supersede previous issues, are temporary and subject to change without notice.

Sizing Matrix

Example: 3575-10 = Series 35, Type 75, 1/2" CTS

3/8 CTS = 08	1/4 OD = 04	1/8 NPT/S = 02	1/2 Hose Barb = 08
1/2 CTS = 10	3/8 OD = 06	1/4 NPT/S = 04	3/4 Hose Barb = 12
3/4 CTS = 14	1/2 OD = 08	3/8 NPT/S = 06	1 Hose Barb = 16
1 CTS = 18		7/16 UNS = 01	
		1/2 NPT/S = 08	
		3/4 NPT/S = 12	
		3/4 CL = 13	
		3/4 GHT = 14	
		1 NPT/S = 16	

LEAD FREE*

Before using standard material product for potable water systems consult your local water authority and building & plumbing codes. Interpretation of the new federal Lead Free law, effective January 4, 2014, may vary according to local governing authorities.

*The wetted surface of this product contacted by consumable water contains less than 0.25% of lead by weight.

Electronic is Green!

For the latest Watts pricing information in electronic format, visit our Data Exchange at:

www.wattswater.com/dataexchange

- Download product and list price data in .csv, .pdf, .tsv, .xls and .xml formats
- Easy access to list price data for business systems
- Sign up for e-mail alerts when data is updated
- Access other Watts Water Technologies brands pricing data

Table of Contents

Terms & Conditions	2
Technical Information	3-5
Features	6-7

TYPE	DESCRIPTION	PAGE
------	-------------	------

Series 10

Tees

Type 23	Tee - Union	8
Type 24R	Tee - Reducing	8

Elbows

Type 17	Elbow - Union	8
Type 17R	Elbow - Reducing Union	8
Type 18	Elbow - Stackable	8
Type 19	Elbow - Male	8

Connectors

Type 15	Connector - Union	9
Type 15R	Connector - Reducing Union	9
Type 10	Connector - Female	9
Type 01	Connector - Male	9

Stems

Type 14R	Stem - Reducing	10
Type 27	Stem - Male	10

Stops

Type 45	End Stop	10
---------	----------	----

Valves

Type 39	Valve - Union Stop	10
Type 62	Valve - Male Stop	10
Type 53	Valve - Female Angle Stop	10

Series LF47

Tees

Type 23	Tee - Union	11
Type 24R	Tee - Reducing	11
Type 26R	Tee - Double Reducing	11
Type 32	Tee - Slip Repair	11

Elbows

Type 17	Elbow - Union	12
Type 17R	Elbow - Reducing Union	12
Type 18	Elbow - Stacking	12
Type 19	Elbow - Male	12
Type 20	Elbow - Female	12
Type 21	Elbow - Drop Ear	12
Type 22	Elbow - Union 45°	12

Connectors

Type 01	Connector - Male	13
Type 10	Connector - Female	13
Type 15	Connector - Union	13
Type 15R	Connector - Reducing Union	13
Type 16	Connector - Slip Repair Union	13

Ends

Type 45	End - Stops	14
---------	-------------	----

Ball Valves

Type FBV	Ball Valves	14
----------	-------------	----

Series 35

Tees

Type 23	Tee - Union	15
Type 24R	Tee - Reducing	15
Type 26	Tee - Double Reducing	15
Type 30	Tee - Male Thread	15
Type 33	Tee - Stackable	15
Type 34	Tee - Stackable Branch	15

Elbows

Type 17	Elbow - Union	16
Type 18	Elbow - Stackable	16
Type 21	Elbow - Drop Ear	16
Type 19	Elbow - Male	16
Type 20	Elbow - Female Swivel	16

TYPE	DESCRIPTION	PAGE
------	-------------	------

Series 35—continued

Type 01	Connector - Male	17
Type 10	Connector - Female	17
Type 13	Connector - Hose Barb Fittings	17
Type 14	Connector - Reducing Stems	17
Type 15	Connector - Union	17
Type 15R	Connector - Reducing Union	18
Type 27	Connector - Male Stem	18
Type 28	Connector - Female Stem	18

End Stops

Type 45	End Stop	18
---------	----------	----

Valves

Type 39	Valve - Stop	19
Type 39R	Valve - Reducing Stop	19
Type 40	Valve - Union Check	19
Type 41	Valve - 3-Way Bypass	19
Type 43	Valve - Stackable	20
Type 50	Valve - Tee	20
Type 52	Valve - Female In-Line	20
Type 53	Valve - Female Angle	20
Type 54	Valve - Female Angle	20
Type 55	Valve - In-Line	20
Type 56	Valve - Angle	20
Type 58	Valve - Angle	21
Type 61	Valve - Adapter Stop	21

Miscellaneous

Type 47	Collet Clip	21
Type 159	O-Ring Assembly	21
Type 161	Cone Seal	21
Type 162	Pipe Inserts	22

Manifolds

Type 89	Manifold Single Union Body	22
Type 90	Manifold Single Stem Body - Right	22
Type 91	Manifold Single Stem Body - Left	22
Type 81	Manifold Single Side Mounting Kit	22
Type 83	Manifold Dual Union Body	22
Type 84	Manifold Dual Stem Body	22
Type 80	Manifold Dual Side Mounting Kit	23

Manifold Accessories

Type 82	Manifold Divider Plug	23
Type 85	Manifold Return End	23
Type 86	Manifold Label Plate - Red	23
Type 87	Manifold Label Plate - Blue	23
Type 88	Manifold Valve Repair Kit	23
Type 80-MT	Manifold Tool	23
Type 14	Reducing Stem	23
Type 46	End Plug	23
	Manifold Installation Dimensions	24
	Manifold Assembly Elements	25-26
	Manifold Style Configurations	27-28

- FREIGHT TERMS:** All shipments are F.O.B. shipping point. Shipments from factory less than 1000 lbs. are F.O.B. factory. Factory shipments of \$2500 and over within the continental U.S.A. will be prepaid and allowed when made at the lowest motor carrier transportation rate.
- TERMS OF SALE:** All sales are F.O.B. shipping point.
- PAYMENT TERMS:** The invoices are due and payable 30 days from the date of invoice.
- PURCHASE ORDER FORMS:** Orders submitted on customer's own purchase order forms will be accepted only with the express understanding that no statements, clauses, or conditions contained in said order form will be binding on the Seller if they in any way modify the Seller's own terms and conditions of sales.
- SPECIAL PRODUCTS:** Orders for special or modified products are non-cancelable. In the event that the customer cancels an order for such products, Watts shall charge the customer an amount equal to Watts' costs and expenses incurred in performing the purchase order prior to receipt of notice of cancellation.

LIMITED WARRANTY: A. Watts Regulator Co. ("Watts") warrants its WaterPEX® cross-linked polyethylene tubing, barbed PEX fittings, brass and plastic Quick-Connect fittings and manifolds, factory manufactured copper manifolds and Quick-Connect accessories to be free of defects in material and workmanship when used under normal usage in potable water systems, and installed in accordance with all Watts printed installation instructions. Specific warranty durations apply as follows:

1. Watts WaterPEX® cross-linked polyethylene (non-barrier PEX) pipe, brass and plastic barbed PEX fittings, and factory manufactured copper manifolds when installed as a system using Watts WaterPEX pipe, Watts brass or plastic barbed PEX fittings, and Watts factory manufactured copper manifolds for a period of twenty-five (25) years from the date of original shipment.
2. Watts WaterPEX® cross-linked polyethylene (non-barrier PEX) pipe, when installed with brass or plastic barbed PEX fittings manufactured by others that meet the applicable ASTM Standards (brass - ASTM F 1807) (plastic - ASTM F 2159) for a period of ten (10) years from the date of original shipment.
3. Watts WaterPEX® brass or plastic barbed PEX fittings and factory manufactured copper manifolds when installed with cross-linked polyethylene (non-barrier PEX) pipe manufactured by others that meet the ASTM F 876 requirements for a period of ten (10) years from the date of original shipment.
4. Series 10, 35, and 45/LF45 Quick-Connect fittings and manifolds for a period of twenty-five (25) years from the date of original shipment.
5. All other valves and accessories sold under the Watts WaterPEX or Watts Quick-Connect brand name for a period of two (2) years from the date of original shipment.

Watts's obligation will be to repair or replace, at its discretion, any of these products proven to be defective in material or workmanship when these products are covered under this limited warranty.

- B. In the event of a system malfunction or leak caused by defective Watts warranted materials (and not by incorrect installation, incorrect handling procedures or by jobsite or installation damage), a reasonable pre-approved amount will be allowed for repair materials and repair labor. In the event of a leak occurring in a factory manifold, you may contact Watts for either a free replacement manifold or any parts reasonably needed to repair such a leak (freight prepaid). Note that Watts limits its warranty to its tubing, valves and accessories, fittings and manifolds. Watts does not warrant the connection on any installation, as the integrity of the connection is subject to the workmanship of the contractor/installer. The connection is the sole responsibility of the person who installs it.
- C. In order to qualify for a warranty remedy under paragraph B, you must contact Watts in advance and receive a written authorization for this remedy from an authorized Watts representative. Repair materials, repair labor and freight expenses not authorized in writing in advance by Watts in this way will not be compensated.
- D. To qualify for the warranty described above, you must do the following:
 1. Use good construction techniques to install our materials, as specified in our current design and installation guidelines and technical notes. This must include field pressure testing our warranted materials before they are covered by concrete or otherwise made inaccessible.
 2. Install Watts WaterPEX® and Watts Quick-Connect materials according to all guidelines and manuals published by Watts.
 3. Install Watts WaterPEX® and Watts Quick-Connect products in a system that will not operate at temperatures or at pressures that exceed the rating printed on the tubing.
 4. The Watts warranted product must be installed in compliance with local building and plumbing codes.
- E. Evidence of tampering, mishandling, neglect, accidental damage, freeze damage or unauthorized repairs that cause damage to Watts's warranted products will void any warranty coverage for those particular products. All field connections are specifically excluded from the terms of this warranty.
- F. Watts provides a complete plumbing system offering so that it is possible to complete an installation with Watts products. However, it is possible that other manufacturers' tubing and/or fittings may be installed in any given installation. Providing that the tubing and/or fittings are manufactured to their applicable ASTM standards, and have been certified by a recognized third-party testing agency, the Watts product in the given installation will continue to be covered under this warranty. In the event of a system malfunction or leak that has other tubing and/or fitting manufacturers' components installed within the failed system, Watts will be responsible only for proven defects in material or workmanship in the Watts products. Products manufactured by another company should be reported to that manufacturer for its warranty response.
- G. Disclaimer of Warranty. **THE WARRANTY SET FORTH HEREIN IS GIVEN EXPRESSLY AND IS THE ONLY WARRANTY GIVEN BY WATTS WITH RESPECT TO THE PRODUCTS LISTED IN PARAGRAPH A. WATTS MAKES NO OTHER WARRANTIES, EXPRESS OR IMPLIED. WATTS HEREBY SPECIFICALLY DISCLAIMS ALL OTHER WARRANTIES, EXPRESS OR IMPLIED, INCLUDING BUT NOT LIMITED TO THE IMPLIED WARRANTIES OF MERCHANTABILITY AND FITNESS FOR A PARTICULAR PURPOSE.**
- H. Limitation of Liability. The remedy described above shall constitute the sole and exclusive remedy for breach of warranty, and, apart from that remedy, Watts shall not be responsible for any incidental, special or consequential damages, including without limitation, lost profits or the cost of repairing or replacing other property which is damaged if these warranted products do not work properly, other costs resulting from labor charges, delays, vandalism, negligence, fouling caused by foreign material, damage from adverse water conditions, adverse chemical environments, or any other circumstances over which Watts has no control. This warranty shall be invalidated by any abuse, misuse, misapplication or improper installation of the product. Some states do not allow limitations on how long an implied warranty lasts, and some states do not allow the exclusion or limitation of incidental or consequential damages. Therefore the above limitations may not apply to you. This Limited Warranty gives you specific legal rights, and you may have other rights that vary from state to state. You should consult applicable state laws to determine your rights. **SO FAR AS IS CONSISTENT WITH APPLICABLE STATE LAW, ANY IMPLIED WARRANTIES THAT MAY NOT BE DISCLAIMED, INCLUDING THE IMPLIED WARRANTIES OF MERCHANTABILITY AND FITNESS FOR A PARTICULAR PURPOSE, ARE LIMITED IN DURATION TO ONE YEAR FROM THE DATE OF ORIGINAL SHIPMENT.**
- I. RETURNED GOODS: No material shall be returned without authorization. When credit is issued it will be at the price charged, or prevailing price if lower, less handling charges based on costs of reconditioning, boxing, etc. However, a minimum 25% handling charge will apply. A minimum handling charge of \$20.00 is applied whenever the 25% handling deduction does not total \$20.00. Products which are obsolete or made to special order are not returnable.

NOTE: Prices and terms are subject to change without notice and supersede all previous quotations. The right is reserved to change or modify product design or construction without prior notice and without incurring an obligation to make such changes and modifications on products previously or subsequently sold.

Material Specifications

Body:	Polypropylene
Collet:	Acetal
O-Ring:	EPDM
Spacer:	Acetal

Fitting Performance

Series 10	Max.	150psi @ 70°F	(10.3 bar @ 20°C)
	Max.	60psi @ 140°F	(4.1 bar @ 60°C)
	Min.	33°F @ 0.5°C	

Thread Torque Values

Size	Max. Torque Values
1/8", 1/4" (3.8mm)	13.3 in - lbs. (1.5 Nm)
3/8", 1/2" (10, 15mm)	26.6 in - lbs. (3.0 Nm)

Approvals



FDA: Watts Series 10 fittings are produced from FDA approved materials.



NSF/ANSI 61-G: Watts Series 10 products are tested, certified, and approved for contact with drinking water.

Lead free product is certified to NSF/ANSI 372 and conforms with the lead content requirements for lead free plumbing as defined by California, Vermont, Maryland, and Louisiana state laws and the U.S. Safe Drinking Water Act.

*The wetted surface of this product contacted by consumable water contains less than 0.25% of lead by weight.

Watts Quick-Connect Series 10 products are designed and manufactured to be trouble free for many years of service life. Series 10 products are designed and manufactured in polypropylene, a rugged thermoplastic polymer. All Series 10 products are approved and certified to NSF-61-G. Series 10 products are available in standard imperial inch sizes. The Watts Quick-Connect design allows for quick and easy connections without installation tools. Simply cut the plastic or copper piping and snap a Watts Quick-Connect fitting in place for a zero leak connection.

Watts Quick-Connect Series 10 fittings are designed for low pressure fluids. For other applications please refer to our Technical Service Department. Tubing should be supported at minimum of 36" to prevent excessive load to the connectors. Do not install tubing supports closer than 3 inches from the connector ends. We strongly recommend that new installations be thoroughly tested prior to use. Do not use with explosive gases, petroleum products, or other fuels.

⚠ CAUTION

The polypropylene material used in the Quick-Connect fittings can be compromised by exposure to volatile organic compounds (VOC's) and caustic chemicals. Therefore, **DO NOT** expose this product to any such chemical or foreign substance, which would include exposure to the following products: **Pipe Dopes (thread sealants)**, bug sprays, lubricants, cleaners, paints, bleaches, acids, solder fluxes, plastic piping primers and cements, oxidizing agents, alkaline solutions, thinners, fuels, oil based caulks, hydrocarbons, spray foam of foaming agents (insulation).

Watts recommends that all fittings and parts be stored in their original packaging until installation to protect the fitting internals from dirt and debris that may cause damage to the o-ring and the o-ring guide.

It is also recommended that all threaded connections be made with Teflon® tape only.

Failure to follow these instructions will void the warranty and possibly result in leaks and water damage.

Material Specifications

Body:	Polysulfone
Collet:	Nylon
O-Ring:	EPDM
Spacer:	Acetal
Tube Liner:	Polysulfone
Collet Clip:	Delrin

Fitting Performance

Series 35	100psi @ 180°F 6.8 bar @ 82°C	250psi @ 75°F 17.25 bar @ 24°C
-----------	----------------------------------	-----------------------------------

Thread Torque Values

Size	Min. Torque Values	Max. Torque Values
1/2"	17.7 in - lbs.	26.5 in - lbs.
3/4"	22.7 in - lbs.	31 in - lbs.

Approvals



FDA: Watts Series 35 fittings are produced from FDA approved materials.



NSF/ANSI 61-G: Watts Series 35 products are tested, certified, and approved for contact with drinking water.



NSF/ANSI 14: Watts Series 35 products are tested, certified, and approved to NSF-14 standards.



ASTM F877: Watts Series 35 products are tested, certified, and approved to ASTM F877 performance standards.



NSF-U.P. Code: Watts Series 35 products are tested, certified, and approved and meet the requirements of the Uniform Plumbing Code.



IAPMO ASSE 1061: Watts Series 35 fittings are tested, certified and approved to ASSE 1061 for Quick-Connect fittings and approved to Canadian Standard CSA B137.5.

Lead free product is certified to NSF/ANSI 372 and conforms with the lead content requirements for lead free plumbing as defined by California, Vermont, Maryland, and Louisiana state laws and the U.S. Safe Drinking Water Act.

*The wetted surface of this product contacted by consumable water contains less than 0.25% of lead by weight.

Watts Quick-Connect Series 35 products are designed and manufactured to be trouble free for many years of service life. Series 35 products are designed and manufactured in polysulfone, a high performance thermal plastic material. All Series 35 products are approved and certified to NSF-61-G, NSF 14, CSA B137.5, ASTM F877, and to the Uniform Plumbing Code (U.P. Code) and ASSE 1061. Series 35 products are available in standard imperial inch sizes. The Watts Quick-Connect design allows for quick and easy connections without installation tools. Simply cut the plastic, copper or CPVC tubing and snap a Watts Quick-Connect fitting in place for a zero leak connection.

Watts Quick-Connect Series 35 fittings are designed for potable water systems. For other applications please refer to our Technical Service Department. Tubing should be supported at minimum of 36" to prevent excessive load to the connectors. Do not install tubing supports closer than 3 inches from the connector ends. We strongly recommend that new installations be thoroughly tested prior to use. Do not use with explosive gases, petroleum products, or other fuels.

CAUTION

The polysulfone material used in the Quick-Connect fittings can be compromised by exposure to volatile organic compounds (VOC's) and caustic chemicals. Therefore, **DO NOT** expose this product to any such chemical or foreign substance, which would include exposure to the following products: **Pipe Dopes (thread sealants)**, bug sprays, lubricants, cleaners, paints, bleaches, acids, solder fluxes, plastic piping primers and cements, oxidizing agents, alkaline solutions, thinners, fuels, oil based caulks, hydrocarbons, spray foam of foaming agents (insulation).

Watts recommends that all fittings and parts be stored in their original packaging until installation to protect the fitting internals from dirt and debris that may cause damage to the o-ring and the o-ring guide.

It is also recommended that all threaded connections be made with Teflon® tape only.

Failure to follow these instructions will void the warranty and possibly result in leaks and water damage.

Material Specifications

Body:	Lead Free* Brass Alloy
O-Ring:	EPDM
Gripper Ring:	Stainless Steel
Push Ring:	Delrin
Tube Liner:	Polysulfone
Push Ring Clip:	Delrin

Fitting Performance

Series LF47 200psi @ 200°F (13.8 bar @ 93° C)

Approvals



ASTM F877: Watts Series LF47 Quick-Connect fittings are tested, certified and approved to ASTM F877 performance standards.



IAPMO ASSE 1061: Watts Series LF47 Quick-Connect fittings are tested, certified and approved to ASSE 1061, and approved to Canadian Standard CSA B137.5 and NSF/ANSI 61.

Lead free product is certified to NSF/ANSI 372 and conforms with the lead content requirements for lead free plumbing as defined by California, Vermont, Maryland, and Louisiana state laws and the U.S. Safe Drinking Water Act.

***The wetted surface of this product contacted by consumable water contains less than 0.25% of lead by weight.**

Watts Quick-Connect Series LF47 fittings are designed and manufactured to be trouble free for many years of service. All Series LF47 fittings are tested, approved and certified to NSF/ANSI 61, CSA B137.5, ASTM F877 and ASSE 1061. Series LF47 fittings are available in standard imperial inch sizes. The unique design of Series LF47 fittings allows for quick and easy connections without installation tools.

Watts Quick-Connect Series LF47 fittings are designed for potable water systems. For other applications please refer to our Technical Service Department. Tubing should be supported at minimum of 36" to prevent excessive load to the connectors. Do not install tubing supports closer than 3 inches from the connector ends. We strongly recommend that new installations be thoroughly tested prior to use. Do not use with explosive gases, petroleum products, or other fuels.

⚠ CAUTION

The polysulfone material used in the Quick Connect fittings can be compromised by exposure to volatile organic compounds (VOC's) and caustic chemicals. Therefore, **DO NOT** expose this product to any such chemical or foreign substance, which would include exposure to the following products: **Pipe Dopes (thread sealants)**, bug sprays, lubricants, cleaners, paints, bleaches, acids, solder fluxes, plastic piping primers and cements, oxidizing agents, alkaline solutions, thinners, fuels, oil based caulks, hydrocarbons, spray foam of foaming agents (insulation).

Watts recommends that all fittings and parts be stored in their original packaging until installation to protect the fitting internals from dirt and debris that may cause damage to the o-ring and the o-ring guide.


It is also recommended that all threaded connections be made with Teflon® tape only.


Failure to follow these instructions will void the warranty and possibly result in leaks and water damage.


All Series LF47 Fittings come complete with a removable push ring clip to prevent accidental release of the fitting prior to pressurization.


Features


Making A Connection with Series 10 and 35

1  Cut the pipe or tubing squarely using a sharp tubing cutter (plastic) or rotary copper pipe cutter (copper). Inspect the outside diameter of the pipe or tubing to be sure there is no damage, nicks, burrs, or debris. Deburr and clean pipe or tubing as necessary.

2  Measure the insertion depth on the pipe or tubing end. The fittings have an insertion line molded into the body of the fitting.

3  For PEX Pipe used with Series 35, gently insert a tube liner (provided for each connection with fitting) into the pipe end.**

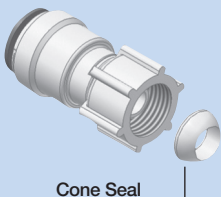
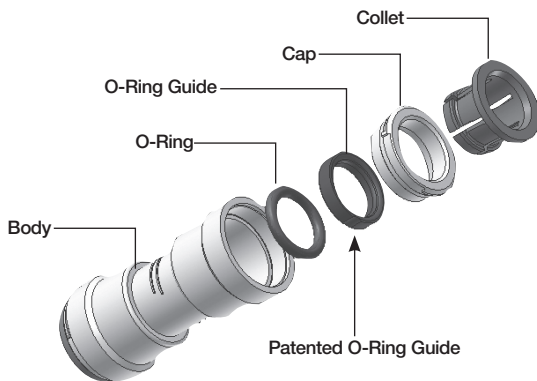
4  **Tube Stop** Make certain to push the tubing completely into the fitting until it comes into contact with the internal tube stop.

5  To disconnect, ensure system has been depressurized before removing fitting. Push the collet in squarely against the face of the fitting. With the collet held securely in this position, the tubing can be removed.

O-Ring Guide

All Watts Quick-Connect fittings incorporate an exclusive O-ring Guide for improved reliability. This unique feature insures zero-leak connections by:

- Protecting the O-ring from damage during connection
- Increasing the connectors' side load capacity
- Correctly aligning the tubing with the O-ring every time.
- Preventing the O-ring from becoming dislodged.

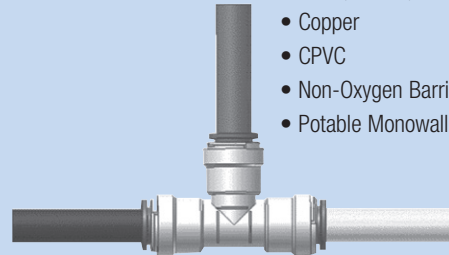


Watts Quick-Connect fittings utilize a swivel nut with NPS straight threads and a cone seal. This allows the installer to thread onto NPT, NPS, BSP, and most threads without tools or thread sealant. Simply thread on, hand tight, for a zero leak seal.

Connect to Multiple Materials

The Watts Quick-Connect fittings incorporates Stainless Steel Gripping Teeth in its Collet. These corrosion resistant teeth allow Quick-Connect fittings to interconnect with multiple materials without the need for special tools.

- LDPE, MDPE, & HDPE PEX Tubings
- Copper
- CPVC
- Non-Oxygen Barrier PEX
- Potable Monowall PEX



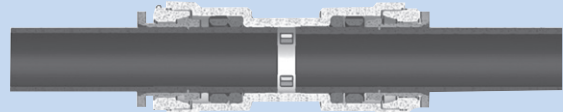
Rotates under pressure

After a joint is made the tubing can still swivel while connected, even under maximum pressure. The ability to rotate under pressure makes these connectors ideal for vibrating and dynamic applications.



Highest Flow

Watts Quick-Connect fittings join the tubing on the outside. Because there is no barb fitting on the inside of the tubing the flow capacity is increased by more than 30%. Only Quick-Connect fittings offer complete flow, allowing for a more efficient system.



Create mini-manifolds

With Quick-Connect fittings small lengths of tubing can be eliminated by using our stackable connector configurations. Simply snap together Tees and/or Elbows to create a mini-manifold of fittings. Because Quick-Connect fittings rotate the direction of the tubing can be oriented by a simple twist, reducing the amount of tubing required to plumb a water system.

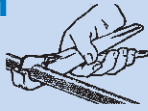


**To comply with ASSE 1061, a tube liner (provided) must be used on all PEX pipe connections Series 35.

Features

Making A Connection with Series LF47

1



Cut the pipe or tubing squarely using a sharp tubing cutter (plastic) or rotary copper pipe cutter (copper). Inspect the outside diameter of the pipe or tubing to be sure there is no damage, nicks, burrs, or debris. Deburr and clean pipe or tubing as necessary.

2

Measure the insertion depth on the pipe or tubing end. For Series LF47 fittings, use the Insertion Depth Guide provided.

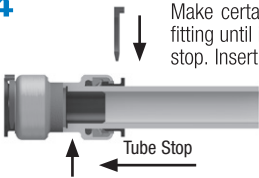
Insertion Depth Guide		
Size	Insertion Depth	
3/8" CTS	1"	25mm
1/2" CTS	1"	25mm
3/4" CTS	1 1/8"	29mm
1" CTS	1 1/4"	32mm

3

For PEX Pipe, gently insert a tube liner (provided for each connection with fitting) into the pipe end.**

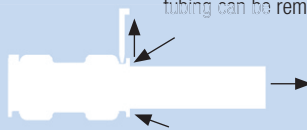


4



Make certain to push the tubing completely into the fitting until it comes into contact with the internal tube stop. Insert push ring clip.

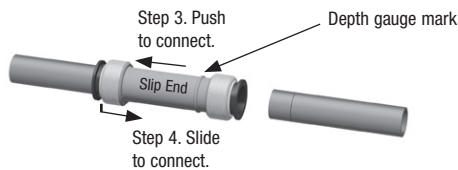
5



To disconnect, ensure system has been depressurized before removing fitting. Remove push ring clip. **Push ring does not require a disconnect tool.** Push the push ring in squarely against the face of the fitting. With the push ring held securely in this position, the tubing can be removed.

Slip Repair Fittings (For copper and CPVC only)

1. Remove 2" section of pipe. Ensure pipe is cut squarely and is free of damage, nicks, burrs, or debris.
2. Measure the insertion depth of the pipe using the depth gauge mark on one end of the fitting.
3. Push pipe and Slip End of fitting together.
4. Press the push ring of Slip End and slide the fitting onto the end of the pipe with insertion depth until it reaches the internal tube stop.



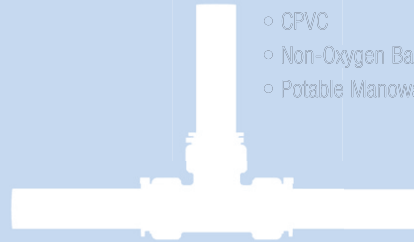
5. Insert push ring clips.



Connect to Multiple Materials

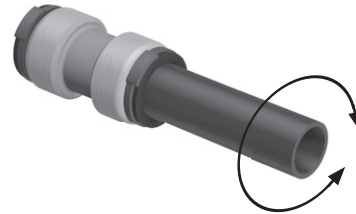
The Watts Quick-Connect fittings incorporates a Stainless Steel Gripper Ring. These corrosion resistant teeth allow Quick-Connect fittings to interconnect with multiple materials without the need for special tools.

- LDPE, MDPE, & HDPE PEX Tubings
- Copper
- CPVC
- Non-Oxygen Barrier PEX
- Potable Manowall PEX



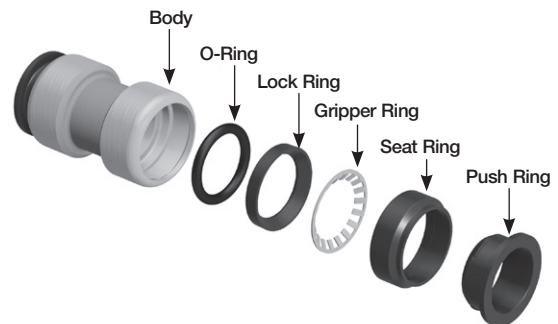
Rotates under pressure

After a joint is made the tubing can still swivel while connected, even under maximum pressure. The ability to rotate under pressure makes these connectors ideal for vibrating and dynamic applications.



Highest Flow

Watts Quick-Connect fittings join the tubing on the outside. Because there is no barb fitting on the inside of the tubing the flow capacity is increased by more than 30%. Only Quick-Connect fittings offer complete flow, allowing for a more efficient system.



**To comply with ASSE 1061, a tube liner (provided) must be used on all PEX pipe connections Series LF47.

Series 10

Model	Ordering Code	Size & Connection	UPC	Ind. Bag	Inner Ctn	Mstr Ctn	Unit Weight (lbs)	List Price
-------	---------------	-------------------	-----	----------	-----------	----------	-------------------	------------

Series 10 Tees

Type 23 Union Tee

LEAD FREE	Model	Ordering Code	Size & Connection	UPC	Ind. Bag	Inner Ctn	Mstr Ctn	Unit Weight (lbs)	List Price
	1023B-04	0666115	1/4" OD	098268426502	10	20	200	.15	\$ 26.25
	1023B-06	0666116	3/8" OD	098268426519	10	10	100	.30	31.00
	1023B-08	0666117	1/2" OD	098268426526	10	6	60	.45	39.00



Type 24R Reducing Tee

LEAD FREE	Model	Ordering Code	Size & Connection	UPC	Ind. Bag	Inner Ctn	Mstr Ctn	Unit Weight (lbs)	List Price
	1024RB-060604	0666118	3/8" OD x 3/8" OD x 1/4" OD	098268426533	10	10	100	.30	\$ 33.25
	1024RB-080806	0666119	1/2" OD x 1/2" OD x 3/8" OD	098268426540	10	5	50	.50	43.25



Series 10 Elbows

Type 17 Union Elbow

LEAD FREE	Model	Ordering Code	Size & Connection	UPC	Ind. Bag	Inner Ctn	Mstr Ctn	Unit Weight (lbs)	List Price
	1017B-04	0666120	1/4" OD	098268426557	10	30	300	.10	\$ 20.50
	1017B-06	0666121	3/8" OD	098268426564	10	10	100	.20	30.75
	1017B-08	0666122	1/2" OD	098268426571	10	10	100	.30	50.25



Type 17R Reducing Union Elbow

LEAD FREE	Model	Ordering Code	Size & Connection	UPC	Ind. Bag	Inner Ctn	Mstr Ctn	Unit Weight (lbs)	List Price
	1017RB-0604	0666146	3/8" OD x 1/4" OD	098268426816	10	20	200	.10	\$ 34.50



Type 18 Stackable Elbow

LEAD FREE	Model	Ordering Code	Size & Connection	UPC	Ind. Bag	Inner Ctn	Mstr Ctn	Unit Weight (lbs)	List Price
	1018B-04	0666142	1/4" OD	098268426779	10	25	250	.15	\$ 24.75
	1018B-06	0666143	3/8" OD	098268426786	10	10	100	.25	30.75
	1018B-08	0666144	1/2" OD	098268426793	10	8	80	.40	38.00



Type 19 Male Elbow

LEAD FREE	Model	Ordering Code	Size & Connection	UPC	Ind. Bag	Inner Ctn	Mstr Ctn	Unit Weight (lbs)	List Price
	1019B-0402	0666135	1/4" OD x 1/8" NPT	098268426700	10	30	300	.10	\$ 18.50
	1019B-0404	0666136	1/4" OD x 1/4" NPT	098268426717	10	30	300	.05	20.75
	1019B-0406	0666137	1/4" OD x 3/8" NPT	098268426724	10	20	200	.20	24.50
	1019B-0604	0666138	3/8" OD x 1/4" NPT	098268426731	10	10	100	.15	27.25
	1019B-0606	0666139	3/8" OD x 3/8" NPT	098268426748	10	20	200	.15	28.50
	1019B-0806	0666140	1/2" OD x 3/8" NPT	098268426755	10	10	100	.25	35.75
	1019B-0808	0666141	1/2" OD x 1/2" NPT	098268426762	10	10	100	.15	36.50



*The wetted surface of this product contacted by consumable water contains less than 0.25% of lead by weight.

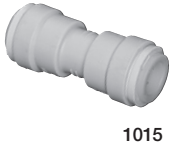
Series 10

Model	Ordering Code	Size & Connection	UPC	Ind. Bag	Inner Ctn	Mstr Ctn	Unit Weight (lbs)	List Price
-------	---------------	-------------------	-----	----------	-----------	----------	-------------------	------------

Series 10 Connectors

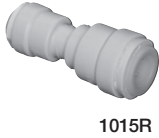
Type 15 Union Connector

LEAD FREE	Model	Ordering Code	Size & Connection	UPC	Ind. Bag	Inner Ctn	Mstr Ctn	Unit Weight (lbs)	List Price
	1015B-04	0666110	1/4" OD	098268426458	10	30	300	.10	\$ 18.25
	1015B-06	0666111	3/8" OD	098268426465	10	10	100	.20	24.25
	1015B-08	0666112	1/2" OD	098268426472	10	10	100	.30	28.50



Type 15R Reducing Union

LEAD FREE	Model	Ordering Code	Size & Connection	UPC	Ind. Bag	Inner Ctn	Mstr Ctn	Unit Weight (lbs)	List Price
	1015RB-0604	0666113	3/8" OD x 1/4" OD	098268426489	10	20	200	.15	\$ 24.50
	1015RB-0806	0666114	1/2" OD x 3/8" OD	098268426496	10	8	80	.35	33.25



Type 10 Female Connector

LEAD FREE	Model	Ordering Code	Size & Connection	UPC	Ind. Bag	Inner Ctn	Mstr Ctn	Unit Weight (lbs)	List Price
	1010B-0401	0666147	1/4" OD x 7/16" UNS	098268426823	10	20	200	.20	\$ 26.75
	1010B-0601	0666148	3/8" OD x 7/16" UNS	098268426830	10	20	200	.18	27.50
	1010B-0404	0666123	1/4" OD x 1/4" NPT	098268426588	10	20	200	.15	40.75
	1010B-0604	0666124	3/8" OD x 1/4" NPT	098268426595	10	20	200	.15	42.00



Type 01 Male Connector

LEAD FREE	Model	Ordering Code	Size & Connection	UPC	Ind. Bag	Inner Ctn	Mstr Ctn	Unit Weight (lbs)	List Price
	1001B-0402	0666125	1/4" OD x 1/8" NPT	098268426601	10	30	300	.05	\$ 12.25
	1001B-0404	0666126	1/4" OD x 1/4" NPT	098268426618	10	30	300	.10	13.75
	1001B-0406	0666127	1/4" OD x 3/8" NPT	098268426625	10	30	300	.10	18.50
	1001B-0408	0666128	1/4" OD x 1/2" NPT	098268426632	10	25	250	.15	23.75
	1001B-0602	0666129	3/8" OD x 1/8" NPT	098268426649	10	25	250	.15	23.75
	1001B-0604	0666130	3/8" OD x 1/4" NPT	098268426656	10	20	200	.15	20.25
	1001B-0606	0666131	3/8" OD x 3/8" NPT	098268426663	10	20	200	.15	23.00
	1001B-0608	0666132	3/8" OD x 1/2" NPT	098268426670	10	20	200	.15	36.00
	1001B-0806	0666133	1/2" OD x 3/8" NPT	098268426687	10	15	150	.20	30.75
	1001B-0808	0666134	1/2" OD x 1/2" NPT	098268426694	10	15	150	.15	33.25



*The wetted surface of this product contacted by consumable water contains less than 0.25% of lead by weight.

Series 10

Model	Ordering Code	Size & Connection	UPC	Ind. Bag	Inner Ctn	Mstr Ctn	Unit Weight (lbs)	List Price
-------	---------------	-------------------	-----	----------	-----------	----------	-------------------	------------



1014R

Series 10 Stems

Type 14R Reducing Stem

LEAD FREE*	1014RB-0604	0666145	3/8" OD x 1/4" OD	098268426809	10	30	300	.05	\$ 20.25
-------------------	-------------	---------	-------------------	--------------	----	----	-----	-----	----------



1027

Type 27 Male Stem

LEAD FREE*	1027B-0402	0666104	1/4" OD x 1/8" NPT	098268426397	10	30	300	.10	\$ 16.75
LEAD FREE*	1027B-0604	0666106	3/8" OD x 1/4" NPT	098268426410	10	10	100	.20	17.50
LEAD FREE*	1027B-0606	0666107	3/8" OD x 3/8" NPT	098268426427	10	10	100	.20	17.00
LEAD FREE*	1027B-0806	0666108	1/2" OD x 3/8" NPT	098268426434	10	10	100	.20	19.25



1045

Series 10 Stops

Type 45 End Stop

LEAD FREE*	1045B-04	0666109	1/4" OD	098268426441	10	50	500	.05	\$ 27.75
-------------------	----------	---------	---------	--------------	----	----	-----	-----	----------



1039

Series 10 Valves

Type 39 Union Stop Valve

LEAD FREE*	1039B-04	0666102	1/4" OD	098268426373	10	8	80	.45	\$ 57.50
LEAD FREE*	1039B-06	0666103	3/8" OD	098268426380	10	6	60	.55	61.00



1062

Type 62 Male Stop Valve

LEAD FREE*	1062B-04	0666100	1/4" OD x 1/4" NPT	098268426359	10	8	80	.45	\$ 57.50
LEAD FREE*	1062B-06	0666101	3/8" OD x 3/8" NPT	098268426366	10	6	60	.55	61.00



1053

Type 53 Female Angle Valve

LEAD FREE*	1053B-0404	0666149	1/4" OD x 1/4" NPT	098268426847	10	8	80	.45	\$ 63.00
LEAD FREE*	1053B-0604	0666150	3/8" OD x 1/4" NPT	098268427134	10	6	60	.50	66.00

*The wetted surface of this product contacted by consumable water contains less than 0.25% of lead by weight.

Series LF47 Tees

Model	Ordering Code	Size & Connection	UPC	Ind. Bag	Inner Ctn	Mstr Ctn	Unit Weight (lbs)	List Price
-------	---------------	-------------------	-----	----------	-----------	----------	-------------------	------------

Type 23 Union Tees

Package Type: Poly Bag



LF4723

LEAD FREE	LF4723-10	0472035	1/2" x 1/2" x 1/2" CTS	098268022315	1	12	120	0.23	\$ 14.00
	LF4723-14	0472036	3/4" x 3/4" x 3/4" CTS	098268022322	1	12	120	0.40	16.75
	LF4723-18	0472037	1" x 1" x 1" CTS	098268022339	1	6	60	0.66	52.00

Type 24R Reducing Tees

Package Type: Poly Bag



LF4724R

LEAD FREE	LF4724R-141410	0472038	3/4" x 3/4" x 1/2" CTS	098268022346	1	12	120	0.34	\$ 15.50
	LF4724R-141014	0472040	3/4" x 1/2" x 3/4" CTS	098268022360	1	12	120	0.36	16.00
	LF4724R-181418	0472041	1" x 3/4" x 1" CTS	098268022377	1	6	60	0.57	29.00

Type 26R Double Reducing Tees

Package Type: Poly Bag



LF4726R

LEAD FREE	LF4726R-141010	0472042	3/4" x 1/2" x 1/2" CTS	098268022391	1	6	60	0.35	\$ 14.75
-----------	----------------	---------	------------------------	--------------	---	---	----	------	----------

Type 32 Slip Repair Tees

Package Type: Poly Bag



LF4732

LEAD FREE	LF4732-10	0472050	1/2" CTS	098268022568	1	6	60	0.32	\$ 18.50
	LF4732-14	0472051	3/4" CTS	098268022582	1	6	60	0.40	22.25
	LF4732-18	0472052	1" CTS	098268022612	1	6	60	0.44	29.75

*The wetted surface of this product contacted by consumable water contains less than 0.25% of lead by weight.

Series LF47 Elbows

Model	Ordering Code	Size & Connection	UPC	Ind. Bag	Inner Ctn	Mstr Ctn	Unit Weight (lbs)	List Price
-------	---------------	-------------------	-----	----------	-----------	----------	-------------------	------------

Type 17 Union Elbows

Package Type: Poly Bag



LF4717

LEAD FREE	LF4717-10	0472016	1/2" CTS	098268022056	1	12	120	0.17	\$ 10.50
	LF4717-14	0472017	3/4" CTS	098268022070	1	12	120	0.30	12.50
	LF4717-18	0472018	1" CTS	098268022087	1	6	60	0.48	21.75

Type 17R Reducing Union Elbows

Package Type: Poly Bag



LF4717R

LEAD FREE	LF4717R-1410	0472019	3/4" x 1/2" CTS	098268022094	1	12	120	0.21	\$ 12.25
	LF4717R-1814	0472020	1" x 3/4" CTS	098268022100	1	6	60	0.40	21.00

Type 18 Stackable Elbows

Package Type: Poly Bag



LF4718

LEAD FREE	LF4718-10	0472021	1/2" CTS	098268022117	1	6	60	0.17	\$ 10.25
	LF4718-14	0472022	3/4" CTS	098268022124	1	6	60	0.30	13.75
	LF4718-18	0472023	1" CTS	098268022131	1	6	60	0.48	20.75

Type 19 Male Elbows

Package Type: Poly Bag



LF4719

LEAD FREE	LF4719-1008	0472025	1/2" CTS x 1/2" NPT	098268022155	1	6	60	0.20	\$ 11.00
	LF4719-1412	0472026	3/4" CTS x 3/4" NPT	098268022162	1	6	60	0.30	16.75

Type 20 Female Elbows

Package Type: Poly Bag



LF4720

LEAD FREE	LF4720-1008	0472028	1/2" CTS x 1/2" NPT	098268022193	1	6	60	0.20	\$ 11.00
	LF4720-1412	0472029	3/4" CTS x 3/4" NPT	098268022209	1	6	60	0.30	18.00

Type 21 Drop Ear Elbows

Package Type: Poly Bag



LF4721

LEAD FREE	LF4721-1008	0472034	1/2" CTS x 1/2" FPT	098268022308	1	6	60	0.23	\$ 9.25
-----------	-------------	---------	---------------------	--------------	---	---	----	------	---------

Type 22 Union Elbow 45°

Package Type: Poly Bag



LF4722

LEAD FREE	LF4722-10	0472031	1/2" CTS 45°	098268022261	1	6	60	0.17	\$ 10.50
	LF4722-14	0472032	3/4" CTS 45°	098268022278	1	6	60	0.30	14.00
	LF4722-18	0472033	1" CTS 45°	098268022292	1	6	60	0.48	20.75

*The wetted surface of this product contacted by consumable water contains less than 0.25% of lead by weight.

Series LF47 Connectors

Model	Ordering Code	Size & Connection	UPC	Ind. Bag	Inner Ctn	Mstr Ctn	Unit Weight (lbs)	List Price
-------	---------------	-------------------	-----	----------	-----------	----------	-------------------	------------

Type 01 Male Connectors

Package Type: Poly Bag

LEAD FREE	LF4701-1008	0472011	½" CTS x ½" NPT	098268021981	1	12	120	0.13	\$ 7.75
	LF4701-1012	0472012	½" CTS x ¾" NPT	098268022001	1	6	60	0.18	10.50
	LF4701-1412	0472013	¾" CTS x ¾" NPT	098268022018	1	12	120	0.20	9.00
	LF4701-1816	0472015	1" CTS x 1" NPT	098268022032	1	6	60	0.28	16.00



LF4701

Type 10 Female Connectors

Package Type: Poly Bag

LEAD FREE	LF4710-1008	0472005	½" CTS x ½" FPT	098268021905	1	12	120	0.14	\$ 7.75
	LF4710-1012	0472006	½" CTS x ¾" NPT	098268021912	1	6	60	0.20	10.50
	LF4710-1412	0472007	¾" CTS x ¾" FPT	098268021929	1	6	60	0.21	9.00
	LF4710-1416	0472008	¾" CTS x 1" NPT	098268021936	1	6	60	0.22	10.50
	LF4710-1816	0472010	1" CTS x 1" FPT	098268021974	1	6	60	0.30	16.00



LF4710

Type 15 Union Connectors

Package Type: Poly Bag

LEAD FREE	LF4715-10	0472000	½" CTS	098268021806	1	12	120	0.14	\$ 10.50
	LF4715-14	0472001	¾" CTS	098268021837	1	12	120	0.23	11.25
	LF4715-18	0472002	1" CTS	098268021851	1	6	60	0.33	21.00



LF4715

Type 15R Reducing Union Connectors

Package Type: Poly Bag

LEAD FREE	LF4715R-1410	0472003	¾" CTS x ½" CTS	098268021868	1	12	120	0.20	\$ 11.00
	LF4715R-1814	0472004	1" CTS x ¾" CTS	098268021875	1	6	60	0.30	26.00



LF4715R

Type 16 Slip Repair Union Connectors

Package Type: Poly Bag

LEAD FREE	LF4716-10	0472047	½" CTS	098268022506	1	12	120	0.25	\$ 15.50
	LF4716-14	0472048	¾" CTS	098268022520	1	6	60	0.39	19.75
	LF4716-18	0472049	1" CTS	098268022537	1	6	60	0.55	27.25



LF4716

*The wetted surface of this product contacted by consumable water contains less than 0.25% of lead by weight.

Series LF47 Ends

Type 45 End Stops

Package Type: Poly Bag



LF4745

LEAD FREE	LF4745-10	0472044	½" CTS	098268340679	1	12	120	0.09	\$ 8.50
	LF4745-14	0472045	¾" CTS	098268340686	1	6	60	0.14	10.75
	LF4745-18	0472046	1" CTS	098268340693	1	6	60	0.21	21.00

Series LF47 Ball Valves

Type FBV Ball Valves

Package Type: Poly Bag



LF47FBVQC

LEAD FREE	LF47FBVQC-10	0472053	½" CTS	098268022667	1	6	60	0.44	\$ 17.50
	LF47FBVQC-14	0472054	¾" CTS	098268022674	1	6	60	0.63	24.00
	LF47FBVQC-18	0472055	1" CTS	098268022681	1	6	60	1.17	41.25

*The wetted surface of this product contacted by consumable water contains less than 0.25% of lead by weight.

Series 35 Tees

Model	Ordering Code	Size & Connection	UPC	Ind. Bag	Inner Ctn	Mstr Ctn	Unit Weight (lbs)	List Price
-------	---------------	-------------------	-----	----------	-----------	----------	-------------------	------------

Type 23 Union Tees

Package Type: Poly Bag



3523

LEAD FREE	3523B-08	0650007	3/8" x 3/8" x 3/8" CTS	098268303315	1	24	120	0.08	\$ 8.25
	3523B-10	0650008	1/2" x 1/2" x 1/2" CTS	098268303322	1	24	120	0.10	8.50
	3523B-14	0650009	3/4" x 3/4" x 3/4" CTS	098268303339	1	8	40	0.15	14.00
	3523B-18	0651176	1" x 1" x 1" CTS	098268353174	1	8	40	0.27	17.50

Type 24R Reducing Tees

Package Type: Poly Bag



3524R

LEAD FREE	3524RB-101004	0650033	1/2" CTS x 1/2" CTS x 1/4" OD	098268303742	1	24	120	0.12	\$ 18.50
	3524RB-141410	0650034	3/4" x 3/4" x 1/2" CTS	098268303759	1	8	40	0.15	12.50
	3524R-181814	0959796	1" x 1" x 3/4" CTS	098268050738	1	5	15	0.19	12.50

Type 26 Double Reducing Tees

Package Type: Poly Bag



3526

LEAD FREE	3526B-141010	0650949	3/4" x 1/2" x 1/2" CTS	098268320800	1	14	140	0.16	\$ 11.50
-----------	--------------	---------	------------------------	--------------	---	----	-----	------	----------

Type 30 Male Thread Tees

Package Type: Poly Bag



3530

LEAD FREE	3530B-1008	0650028	1/2" x 1/2" x 1/2" NPT	098268303698	1	24	120	0.09	\$ 7.50
-----------	------------	---------	------------------------	--------------	---	----	-----	------	---------

Type 33 Stackable Tees

Package Type: Poly Bag



3533

LEAD FREE	3533B-10	0650019	1/2" x 1/2" x 1/2" CTS	098268303452	1	16	80	0.12	7.75
-----------	----------	---------	------------------------	--------------	---	----	----	------	------

Type 34 Stackable Branch Tees

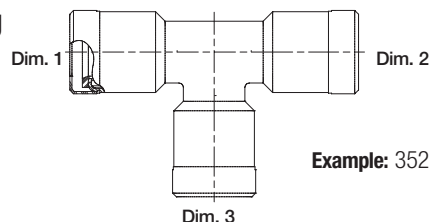
Package Type: Poly Bag



3534

LEAD FREE	3534B-10	0650024	1/2" x 1/2" x 1/2" CTS	098268303636	1	24	120	0.08	\$ 8.75
-----------	----------	---------	------------------------	--------------	---	----	-----	------	---------

Tee Sizing



Example: 3524RB-141410 = Dim. 1 (3/4") Dim. 2 (3/4") Dim. 3 (1/2")

*The wetted surface of this product contacted by consumable water contains less than 0.25% of lead by weight.

Series 35 Elbows

Model	Ordering Code	Size & Connection	UPC	Ind. Bag	Inner Ctn	Mstr Ctn	Unit Weight (lbs)	List Price
-------	---------------	-------------------	-----	----------	-----------	----------	-------------------	------------

Type 17 Union Elbows

Package Type: Poly Bag



3517

LEAD FREE	Model	Ordering Code	Size & Connection	UPC	Ind. Bag	Inner Ctn	Mstr Ctn	Unit Weight (lbs)	List Price
	3517B-08	0650046	3/8" CTS	098268304633	1	24	120	0.05	\$ 8.25
	3517B-10	0650047	1/2" CTS	098268304640	1	24	120	0.09	9.00
	3517B-14	0650048	3/4" CTS	098268304657	1	16	80	0.12	14.00
	3517B-18	0650951	1" CTS	098268320824	1	10	100	0.15	16.00

Type 18 Stackable Elbows

Package Type: Poly Bag



3518

LEAD FREE	Model	Ordering Code	Size & Connection	UPC	Ind. Bag	Inner Ctn	Mstr Ctn	Unit Weight (lbs)	List Price
	3518B-08	0650058	3/8" CTS	098268304787	1	24	120	0.05	\$ 5.50
	3518B-10	0650059	1/2" CTS	098268304800	1	24	120	0.08	6.00
	3518B-14	0650060	3/4" CTS	098268304817	1	16	80	0.15	8.00
	3518B-18	0651174	1" CTS	098268353150	1	16	80	0.15	10.25

Type 21 Drop Ear Elbows

Package Type: Poly Bag



3521

LEAD FREE	Model	Ordering Code	Size & Connection	UPC	Ind. Bag	Inner Ctn	Mstr Ctn	Unit Weight (lbs)	List Price
	3521B-1008	0650065	1/2" CTS x 1/2" NPT	098268304879	1	8	40	0.18	\$ 8.50

Type 19 Male Elbows

Package Type: Poly Bag



3519

LEAD FREE	Model	Ordering Code	Size & Connection	UPC	Ind. Bag	Inner Ctn	Mstr Ctn	Unit Weight (lbs)	List Price
	3519B-1006	0650160	1/2" CTS x 3/8" NPT	098268306248	1	24	120	0.07	\$ 7.00
	3519B-1008	0650161	1/2" CTS x 1/2" NPT	098268306255	1	24	120	0.07	6.00
	3519B-1816	0651175	1" CTS x 1" NPT	098268353167	1	16	80	0.15	10.25

Type 20 Female Swivel Elbows

Package Type: Poly Bag



3520

LEAD FREE	Model	Ordering Code	Size & Connection	UPC	Ind. Bag	Inner Ctn	Mstr Ctn	Unit Weight (lbs)	List Price
	3520B-0808	0650130	3/8" CTS x 1/2" NPS	098268305920	1	24	120	0.07	\$ 7.50
	3520B-1008	0650132	1/2" CTS x 1/2" NPS	098268305944	1	24	120	0.08	8.00
	3520B-1012	0650133	1/2" CTS x 3/4" NPS	098268305951	1	24	120	0.12	10.00

*The wetted surface of this product contacted by consumable water contains less than 0.25% of lead by weight.

Series 35 Connectors

Model	Ordering Code	Size & Connection	UPC	Ind. Bag	Inner Ctn	Mstr Ctn	Unit Weight (lbs)	List Price
-------	---------------	-------------------	-----	----------	-----------	----------	-------------------	------------

Type 01 Male Connectors

Package Type: Poly Bag

LEAD FREE*	3501B-0806	0650952	3/8" CTS x 3/8" NPT	098268320831	1	15	150	0.04	\$ 5.00
	3501B-1006	0650953	1/2" CTS x 3/8" NPT	098268320848	1	15	150	0.02	5.50
	3501B-0808	0650174	3/8" CTS x 1/2" NPT	098268306392	1	24	120	0.05	5.50
	3501B-1008	0650175	1/2" CTS x 1/2" NPT	098268306408	1	24	120	0.07	5.75
	3501B-1012	0650176	1/2" CTS x 3/4" NPT	098268306415	1	24	120	0.08	6.75
	3501B-1412	0650178	3/4" CTS x 3/4" NPT	098268306439	1	24	120	0.10	7.75
	3501B-1816	0650983	1" CTS x 1" NPT	098268334890	1	24	120	0.18	8.00



3501

Type 10 Female Connectors

Package Type: Poly Bag

LEAD FREE*	3510B-0808	0650103	3/8" CTS x 1/2" NPS	098268305647	1	24	120	0.05	\$ 7.00
	3510B-1008	0650104	1/2" CTS x 1/2" NPS	098268305654	1	24	120	0.09	6.75
	3510B-1012	0650105	1/2" CTS x 3/4" NPS	098268305661	1	24	120	0.10	10.00
	3510B-1013	0650106	1/2" CTS x 3/4" Closet	098268305678	1	24	120	0.06	7.00
	3510B-1014	0650107	1/2" CTS x 3/4" FGHT	098268305685	1	24	120	0.05	12.00
	3510B-1412	0650108	3/4" CTS x 3/4" NPS	098268305692	1	24	120	0.10	11.50
	3510-1816	0959298	1" CTS x 1" NPS	098268346633	1	5	30	0.15	12.75



3510

Type 13 Hose Barb Fittings

Package Type: Poly Bag

LEAD FREE*	3513B-1412	0650954	3/4" CTS x 3/4" Barb	098268320855	1	28	280	0.07	8.75
------------	------------	---------	----------------------	--------------	---	----	-----	------	------



3513

Type 14 Reducing Stems

Package Type: Poly Bag

LEAD FREE*	3514B-1008	0650151	1/2" CTS x 3/8" CTS	098268306156	1	24	120	0.06	\$ 5.00
	3514B-1410	0650152	3/4" CTS x 1/2" CTS	098268306163	1	24	120	0.07	5.75
	3514-1810	0959407	1" CTS x 1/2" CTS	098268533408	1	5	30	0.05	9.00
	3514B-1814	0650767	1" CTS x 3/4" CTS	098268309850	1	24	120	0.10	10.25



3514

Type 15 Union Connectors

Package Type: Poly Bag

LEAD FREE*	3515B-08	0650073	3/8" CTS	098268304992	1	24	120	0.05	\$ 7.00
	3515B-10	0650074	1/2" CTS	098268305005	1	24	120	0.09	7.75
	3515B-14	0650075	3/4" CTS	098268305012	1	24	120	0.15	10.00
	3515B-18	0650950	1" CTS	098268320817	1	10	100	0.15	15.50



3515

*The wetted surface of this product contacted by consumable water contains less than 0.25% of lead by weight.

Series 35 Connectors

Model	Ordering Code	Size & Connection	UPC	Ind. Bag	Inner Ctn	Mstr Ctn	Unit Weight (lbs)	List Price
-------	---------------	-------------------	-----	----------	-----------	----------	-------------------	------------

Type 15R Reducing Union Connectors

Package Type: Poly Bag



3515R

LEAD FREE*	Model	Ordering Code	Size & Connection	UPC	Ind. Bag	Inner Ctn	Mstr Ctn	Unit Weight (lbs)	List Price
	3515RB-1004	0650084	1/2" CTS x 1/4" OD	098268305104	1	24	120	0.08	\$ 14.00
	3515RB-1008	0650085	1/2" CTS x 3/8" CTS	098268305111	1	24	120	0.07	7.50
	3515RB-1410	0650725	3/4" CTS x 1/2" CTS	098268309355	1	24	120	0.10	8.75
	3515RB-1814	0651173	1" CTS x 3/4" CTS	098268353143	1	24	120	0.14	10.00



3527

Type 27 Male Stem

Package Type: Poly Bag

LEAD FREE*	Model	Ordering Code	Size & Connection	UPC	Ind. Bag	Inner Ctn	Mstr Ctn	Unit Weight (lbs)	List Price
	3527B-1008	0650791	1/2" CTS x 1/2" NPT	098268424621	1	24	120	0.08	\$ 3.00



3528

Type 28 Female Stem

Package Type: Poly Bag

LEAD FREE*	Model	Ordering Code	Size & Connection	UPC	Ind. Bag	Inner Ctn	Mstr Ctn	Unit Weight (lbs)	List Price
	3528B-1008	0650792	1/2" CTS x 1/2" NPS	098268424638	1	10	100	0.08	\$ 3.25

Series 35 Ends

Type 45 End Stops

Package Type: Poly Bag



3545

LEAD FREE*	Model	Ordering Code	Size & Connection	UPC	Ind. Bag	Inner Ctn	Mstr Ctn	Unit Weight (lbs)	List Price
	3545-08	0959042	3/8" CTS	098268298734	1	5	60	0.01	\$ 6.25
	3545B-10	0650236	1/2" CTS	098268307368	1	24	120	0.05	5.25
	3545B-14	0650709	3/4" CTS	098268309089	1	24	120	0.06	7.00
	3545B-18	0650771	1" CTS	098268309898	1	24	120	0.08	10.25

*The wetted surface of this product contacted by consumable water contains less than 0.25% of lead by weight.

Series 35 Valves

Model	Ordering Code	Size & Connection	UPC	Ind. Bag	Inner Ctn	Mstr Ctn	Unit Weight (lbs)	List Price
-------	---------------	-------------------	-----	----------	-----------	----------	-------------------	------------

Type 39 Stop Valves

Package Type: Poly Bag



LEAD FREE*	3539B-08	0650245	3/8" CTS	098268307580	1	24	120	0.09	\$ 12.50
	3539B-10	0650246	1/2" CTS	098268307597	1	16	80	0.16	13.50
	3539B-14	0650789	3/4" CTS	098268310177	1	16	80	0.20	17.25
	3539B-18	0650964	1" CTS	098268063462	1	8	40	0.25	22.25

Type 39R Reducing Stop Valve

Package Type: Poly Bag



LEAD FREE*	3539RB-1004	0650251	1/2" CTS x 1/4" OD	098268307924	1	16	80	0.14	\$ 22.50
------------	-------------	---------	--------------------	--------------	---	----	----	------	----------

Type 40 Union Check Valve

Package Type: Poly Bag



LEAD FREE*	3540B-10	0650271	1/2" CTS	098268308174	1	24	120	0.09	\$ 8.00
------------	----------	---------	----------	--------------	---	----	-----	------	---------



Type 41 3-Way Bypass Valve

Package Type: Poly Bag

LEAD FREE*	3541-10	0959474	1/2" CTS	098268089363	1	5	15	0.14	\$ 22.75
------------	---------	---------	----------	--------------	---	---	----	------	----------

*The wetted surface of this product contacted by consumable water contains less than 0.25% of lead by weight.

Series 35 Valves - cont.



3543

Model	Ordering Code	Size & Connection	UPC	Ind. Bag	Inner Ctn	Mstr Ctn	Unit Weight (lbs)	List Price
-------	---------------	-------------------	-----	----------	-----------	----------	-------------------	------------

Type 43 Stackable Valve

Package Type: Poly Bag

LEAD FREE*	3543B-10	0650255	1/2" CTS	098268307962	1	16	80	0.14	\$ 10.50
-------------------	----------	---------	----------	--------------	---	----	----	------	----------



3550

Type 50 Tee Valves

Package Type: Poly Bag

LEAD FREE*	3550B-1004	0651188	1/2" CTS x 1/4" OD	098268357905	1	12	60	0.12	20.00
-------------------	------------	---------	--------------------	--------------	---	----	----	------	-------



3552

Type 52 Female In-Line Valves

Package Type: Poly Bag

LEAD FREE*	3552-0806	0959186	1/2" NPS x 1/4" CTS	098268322668	1	5	30	0.20	\$ 8.75
	3552-0808	0959187	1/2" NPS x 3/8" CTS	098268322675	1	5	30	0.25	\$ 8.75



3553

Type 53 Female Angle Valves

Package Type: Poly Bag

LEAD FREE*	3553B-0608	0651206	1/2" NPS x 1/4" CTS	098268433579	1	16	80	0.08	\$ 10.00
-------------------	------------	---------	---------------------	--------------	---	----	----	------	----------



3554

Type 54 Female Angle Valve

Package Type: Poly Bag

LEAD FREE*	3554B-1408	0651208	1/2" NPS x 3/4" MGHT	098268433593	1	16	80	0.11	\$ 12.00
-------------------	------------	---------	----------------------	--------------	---	----	----	------	----------



3555

Type 55 In-Line Valves

Package Type: Poly Bag

LEAD FREE*	3555B-1006	0651200	1/2" CTS x 1/4" CTS	098268433517	1	16	80	0.08	\$ 11.25
	3555B-1008	0651201	1/2" CTS x 3/8" CTS	098268433524	1	16	80	0.08	10.75



3556

Type 56 Angle Valves

Package Type: Poly Bag

LEAD FREE*	3556B-1008	0651203	1/2" CTS x 3/8" CTS	098268433548	1	16	80	0.08	10.50
-------------------	------------	---------	---------------------	--------------	---	----	----	------	-------

*The wetted surface of this product contacted by consumable water contains less than 0.25% of lead by weight.

Series 35 Valves - cont.

Model	Ordering Code	Size & Connection	UPC	Ind. Bag	Inner Ctn	Mstr Ctn	Unit Weight (lbs)	List Price
-------	---------------	-------------------	-----	----------	-----------	----------	-------------------	------------



3558

Type 58 Angle Valve

Package Type: Poly Bag

LEAD FREE*	3558B-1014	0651210	1/2" CTS x 3/4" MGHT	098268433616	1	16	80	0.08	\$ 10.00
------------	------------	---------	----------------------	--------------	---	----	----	------	----------



LF3561

Type 61 Adapter Stop Valves

Package Type: Poly Bag

LEAD FREE*	LF3561B-0604	0651278	1/4" OD x 3/8" Male Comp x 3/8" Female Comp	098268806199	1	8	40	0.16	15.25
------------	--------------	---------	--	--------------	---	---	----	------	-------

Series 35 Miscellaneous



3547

Type 47 Collet Clips

Package Type: Poly Bag

LEAD FREE*	3547B-10	0650292	1/2" CTS	098268308631	3	24	120	0.04	2.75
	3547B-14	0650293	3/4" CTS	098268308648	3	24	120	0.04	2.75
	3547-18	0959268	1" CTS	098268338430	3	5	60	0.50	2.75



159

Type 159 O-Ring Assembly

Package Type: Poly Bag

LEAD FREE*	159B-10	0650718	1/2" CTS	098268309270	1	24	120	0.01	2.25
------------	---------	---------	----------	--------------	---	----	-----	------	------



161

Type 161 Cone Seals

Package Type: Poly Bag

LEAD FREE*	161B-08	0650723	1/2" NPS	098268309331	1	24	120	0.01	\$ 2.00
	161B-12	0650724	3/4" NPS/FGHT	098268309348	1	24	120	0.01	3.00

*The wetted surface of this product contacted by consumable water contains less than 0.25% of lead by weight.

Series 35 Miscellaneous - cont.



162

Model	Ordering Code	Size & Connection	UPC	Ind. Bag	Inner Ctn	Mstr Ctn	Unit Weight (lbs)	List Price
-------	---------------	-------------------	-----	----------	-----------	----------	-------------------	------------

Type 162 Pipe Inserts

Package Type: Poly Bag

LEAD FREE*	Model	Ordering Code	Size & Connection	UPC	Ind. Bag	Inner Ctn	Mstr Ctn	Unit Weight (lbs)	List Price
	162-10	0651160	½" CTS	098268340716	1	24	120	0.01	1.75
	162-14	0651161	¾" CTS	098268340723	1	24	120	0.01	2.00
	162-18	0651162	1" CTS	098268340730	1	24	120	0.01	2.00

Series 35 Manifolds - Single



3589

Type 89 Manifolds - Single Union Body

Package Type: Poly Bag

LEAD FREE*	Model	Ordering Code	Size & Connection	UPC	Ind. Bag	Inner Ctn	Mstr Ctn	Unit Weight (lbs)	List Price
	3589B-1810	0650764	1" CTS x ½" CTS	098268309829	1	6	60	0.20	\$ 27.75



3590

Type 90 Manifolds - Single Stem Body - Right

Package Type: Poly Bag

LEAD FREE*	Model	Ordering Code	Size & Connection	UPC	Ind. Bag	Inner Ctn	Mstr Ctn	Unit Weight (lbs)	List Price
	3590B-1810	0650765	1" CTS x ½" CTS	098268309836	1	5	50	0.20	\$ 23.75

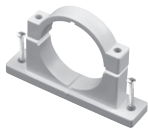


3591

Type 91 - Manifold - Single Stem Body - Left

Package Type: Poly Bag

LEAD FREE*	Model	Ordering Code	Size & Connection	UPC	Ind. Bag	Inner Ctn	Mstr Ctn	Unit Weight (lbs)	List Price
	3591-1810	0959259	1" CTS x ½" CTS	098268338348	1	5	15	0.26	\$ 24.75



3581

Type 81 - Manifold Single Side Mounting Kits

Package Type: Poly Bag

LEAD FREE*	Model	Ordering Code	Size & Connection	UPC	Ind. Bag	Inner Ctn	Mstr Ctn	Unit Weight (lbs)	List Price
	3581B-18	0650769	For 35 Series	098268309874	1	24	120	0.07	\$ 12.00

Series 35 Manifolds - Dual



3583

Type 83 Manifolds - Dual Union Body

Package Type: Poly Bag

LEAD FREE*	Model	Ordering Code	Size & Connection	UPC	Ind. Bag	Inner Ctn	Mstr Ctn	Unit Weight (lbs)	List Price
	3583B-1810	0650757	1" CTS x ½" CTS	098268309751	1	3	30	0.43	\$ 48.50



3584

Type 84 Manifolds - Dual Stem Body

Package Type: Poly Bag

LEAD FREE*	Model	Ordering Code	Size & Connection	UPC	Ind. Bag	Inner Ctn	Mstr Ctn	Unit Weight (lbs)	List Price
	3584B-1810	0650758	1" CTS x ½" CTS	098268309768	1	2	20	0.40	\$ 41.25

*The wetted surface of this product contacted by consumable water contains less than 0.25% of lead by weight.

Series 35 Manifolds - Dual - cont.

Model	Ordering Code	Size & Connection	UPC	Ind. Bag	Inner Ctn	Mstr Ctn	Unit Weight (lbs)	List Price
-------	---------------	-------------------	-----	----------	-----------	----------	-------------------	------------



3580

Type 80 Manifold Dual Side Mounting Kits

Package Type: Poly Bag

LEAD FREE*	3580B-18	0650770	For 35 Series	098268309881	1	24	120	0.09	\$ 13.25
-------------------	----------	---------	---------------	--------------	---	----	-----	------	----------

Series 35 Manifold Accessories

Type 82 Manifold Divider Plugs

Package Type: Poly Bag



3582

LEAD FREE*	3582B-18	0650759	For 35 Series	098268309775	1	24	120	0.02	\$ 5.75
-------------------	----------	---------	---------------	--------------	---	----	-----	------	---------

Type 85 Manifold Return Ends

Package Type: Poly Bag

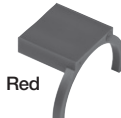


3585

LEAD FREE*	3585B-18	0650760	1" CTS	098268309782	1	12	120	0.15	\$ 18.00
-------------------	----------	---------	--------	--------------	---	----	-----	------	----------

Type 86 Manifold Label Plates

Package Type: Poly Bag



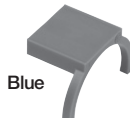
Red

3586

LEAD FREE*	3586B-18	0650761	Red - For 35 and Metric	098268309799	1	24	120	0.01	\$ 2.75
-------------------	----------	---------	-------------------------	--------------	---	----	-----	------	---------

Type 87 Manifold Label Plates

Package Type: Poly Bag



Blue

3587

LEAD FREE*	3587B-18	0650762	Blue - For 35 and Metric	098268309805	1	24	120	0.01	\$ 2.75
-------------------	----------	---------	--------------------------	--------------	---	----	-----	------	---------

Type 88 Manifold Valve Repair Kits

Package Type: Poly Bag



3588

LEAD FREE*	3588B-10	0650763	1/2" Spool	098268309812	1	24	120	0.07	\$ 6.00
-------------------	----------	---------	------------	--------------	---	----	-----	------	---------

Type 80-MT Manifold Tool

Package Type: Poly Bag



3580-MT

LEAD FREE*	3580-MT	0650975	Easy Removal of Outlets	098268326703	1	10	50	0.21	\$ 9.00
-------------------	---------	---------	-------------------------	--------------	---	----	----	------	---------

Type 14 Reducing Stems

Package Type: Poly Bag



3514

LEAD FREE*	3514-1810	0959407	1" CTS x 1/2" CTS	098268533408	1	5	30	0.05	9.00
LEAD FREE*	3514B-1814	0650767	1" CTS x 3/4" CTS	098268309850	1	24	120	0.07	10.25

Type 46 End Plugs

Package Type: Poly Bag



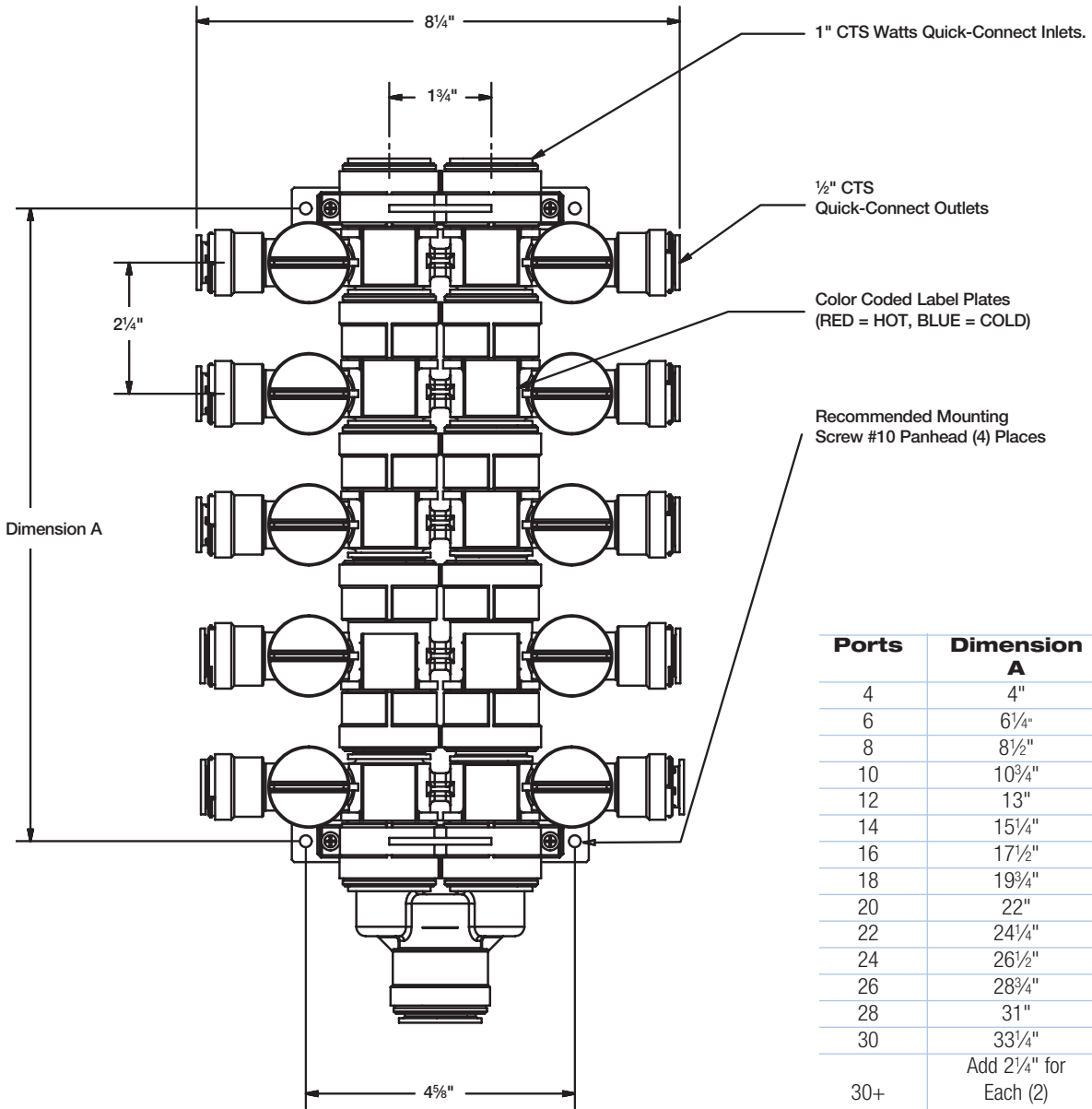
3546

LEAD FREE*	3546B-18	0650773	1" CTS	098268310009	1	24	120	0.04	\$ 7.00
-------------------	----------	---------	--------	--------------	---	----	-----	------	---------

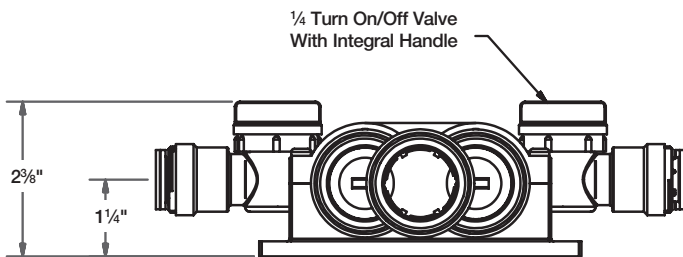
*The wetted surface of this product contacted by consumable water contains less than 0.25% of lead by weight.

Installation Dimensions

35 Series Quick-Connect Manifold



Ports	Dimension A
4	4"
6	6 1/4"
8	8 1/2"
10	10 3/4"
12	13"
14	15 1/4"
16	17 1/2"
18	19 3/4"
20	22"
22	24 1/4"
24	26 1/2"
26	28 3/4"
28	31"
30	33 1/4"
30+	Add 2 1/4" for Each (2) Additional Port

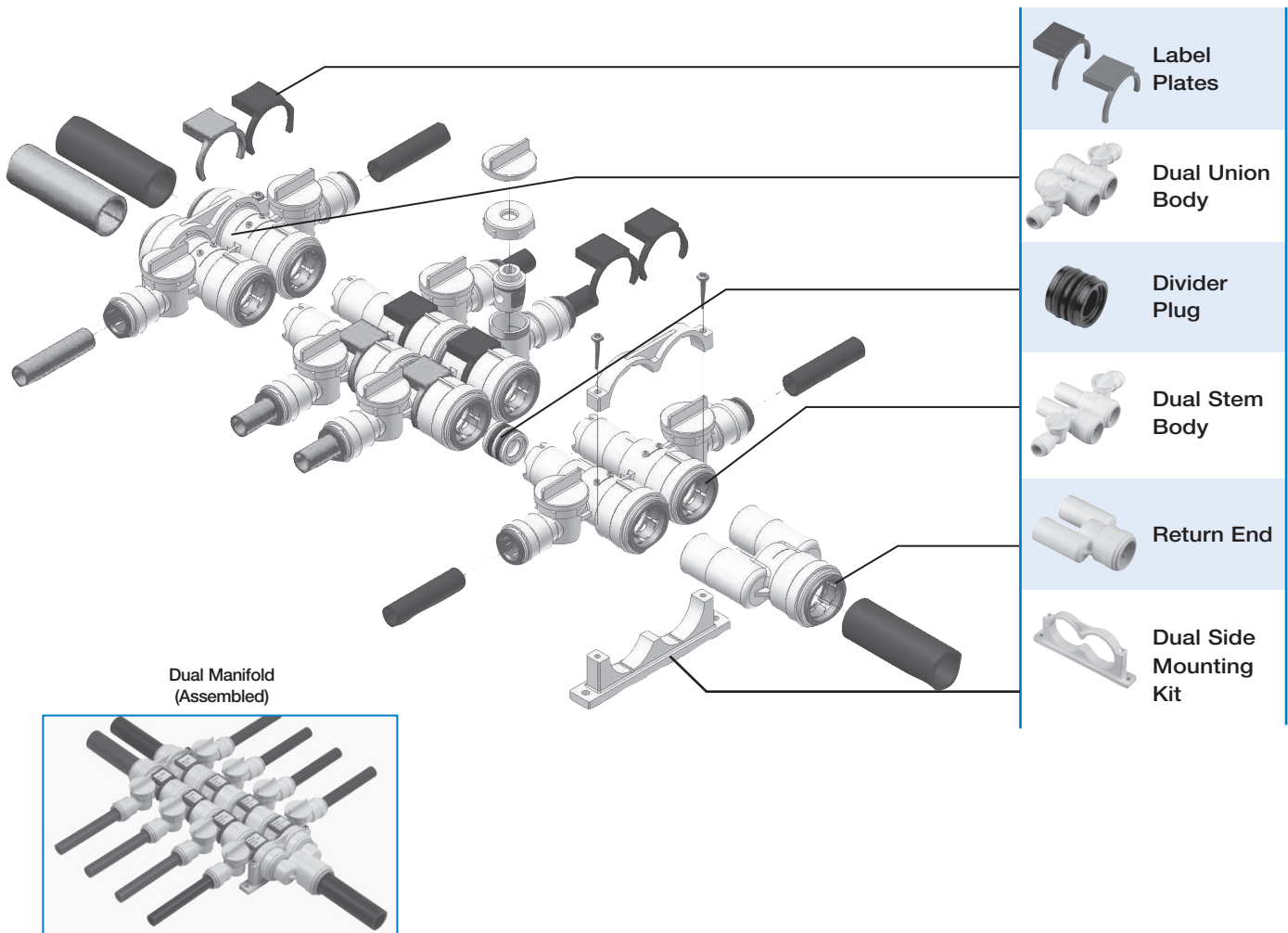


35 Series Quick-Connect Manifold

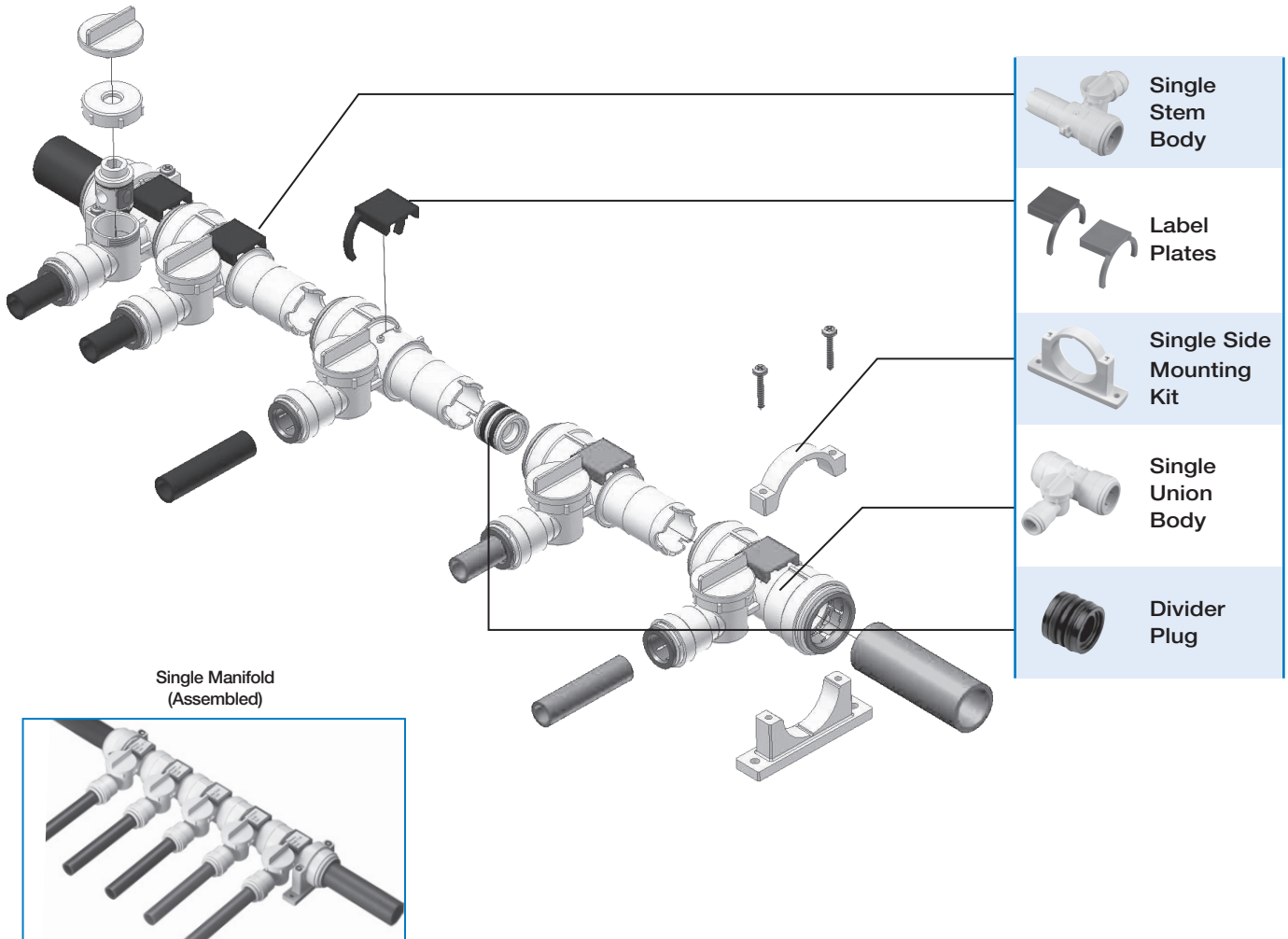
Features

- Integral High-Flow Shutoff Valves
- Eliminates Fittings
- Modular design allows for flexibility
- Increase water flow
- Serviceable Shutoff Valves
- Single and Dual Sections can be connected together
- Field Configurable
- Available in single or dual outlet configurations

Dual Side Style



Single Side Style



35 Series Quick-Connect Manifold

Watts Manifolds operate much like an electrical breaker box. The main water supply lines bring water into the manifold and individual distribution lines move water out to each fixture. All outlets have a built in valve which allows you the ability to stop the water flow to any single fixture without shutting down the entire water system.

The new Watts Manifold System utilizes an exclusive modular design. Manifold Sections can be purchased individually and simply snapped together to create the ideal configuration for each application.

Features

Performance ratings

100psi@180°F

6.8 bar @ 82°C

250psi@75°F

17.25 bar @ 24°C

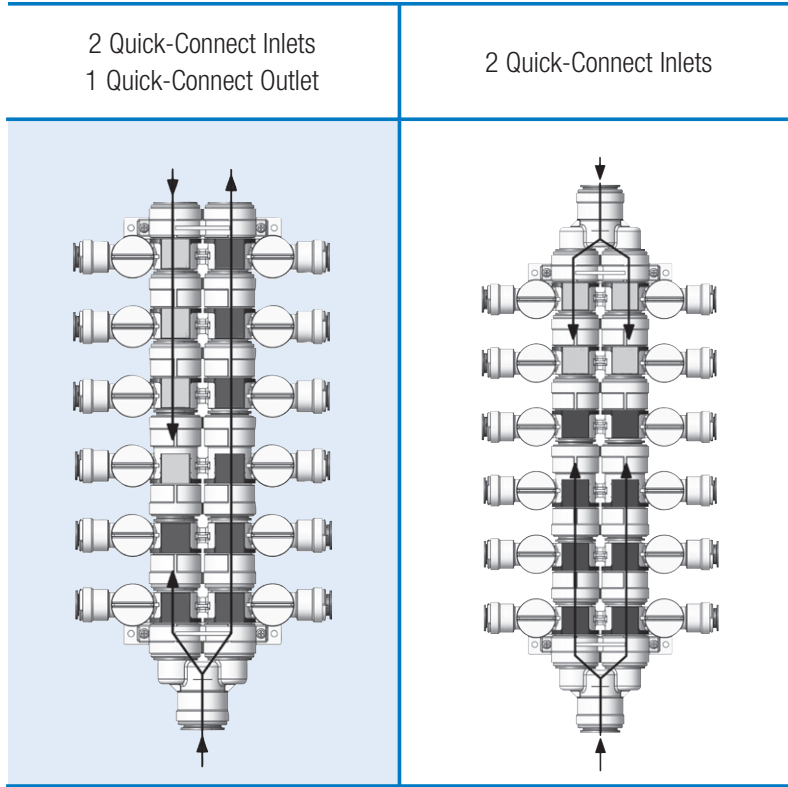
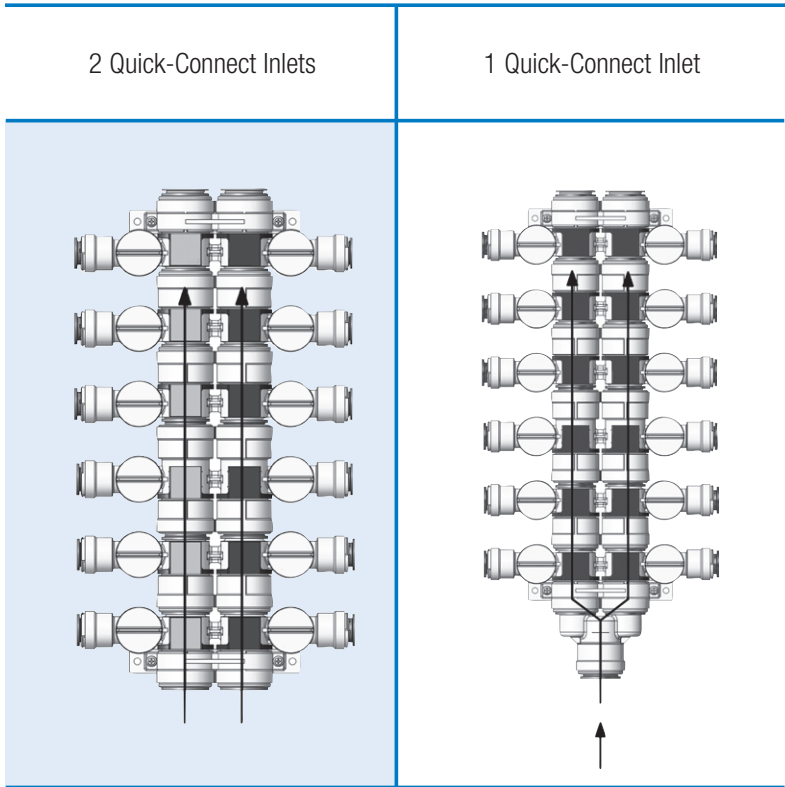
- Complies with NSF and FDA standards
- All Inlets are 1" CTS, use a Reducing Stem to create other inlet sizes

Single Examples

1 Quick-Connect Inlet Single Temperature Use (Hot or Cold)	2 Quick-Connect Inlets Single Temperature Use (Hot or Cold)	2 Quick-Connect Inlets Dual Temperature Use (Hot & Cold)

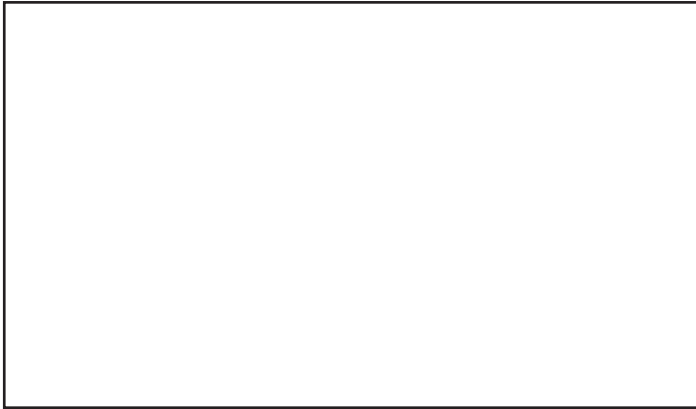
Configuration Styles

Dual Examples



To locate your nearest Watts representative, please click on our *find a sales rep* locator on watts.com.

Represented by:



USA: T: (978) 689-6066 • F: (978) 975-8350 • Watts.com
Canada: T: (905) 332-4090 • F: (905) 332-7068 • Watts.ca
Latin America: T: (52) 81-1001-8600 • Watts.com