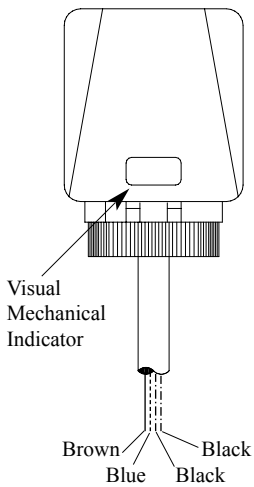


Product Bulletin: Manifold Thermal Actuator



3131 W. Chestnut Expressway
Springfield, MO 65802
ph: 417.864.6108
fax: 417.864.8161
www.wattsradiant.com



Watts Radiant Thermal Actuators are a four wire actuator designed to be used with Watts Radiant Stainless Steel and Cast Brass manifolds.

Actuators are normally closed and will open when power is applied. Travel time for the actuators are approximately 90 sec. to close the end switch.

The Visual Mechanical Indicator will show the state of the valve (open or closed).

Red = valve plug closed
Black = valve plug open

Specifications:

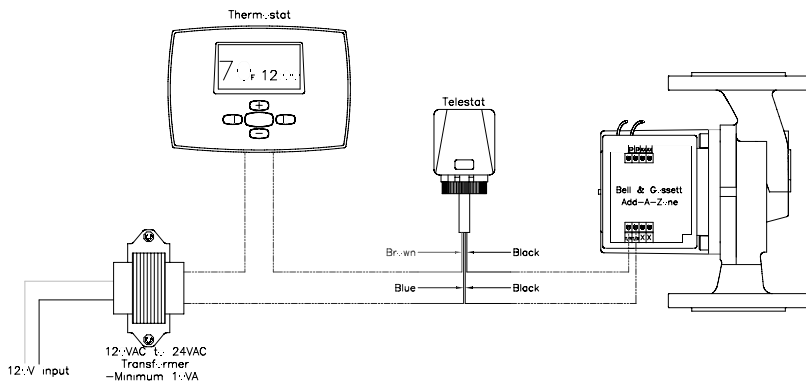
Each actuator will consume 2.5VA (2.5W) at 24 Volt power with max end switch load of 700 mA. A typical 40 VA transformer will be able to power 14 actuators.

Rating:

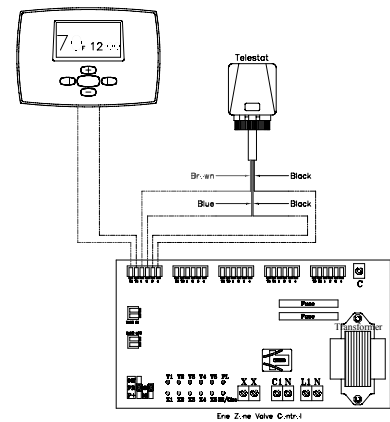
Each actuator has an end switch rating of 175 W.

Temperature Range:

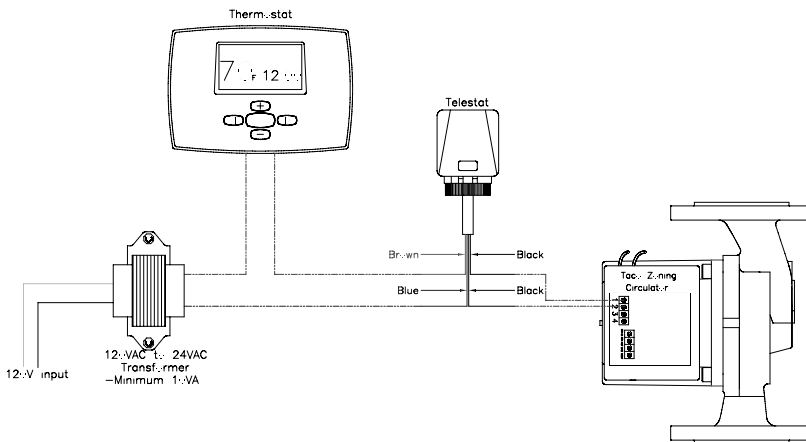
Ambient temperature range: 32°F – 122°F
Storage temperature range: -77°F – 140°F



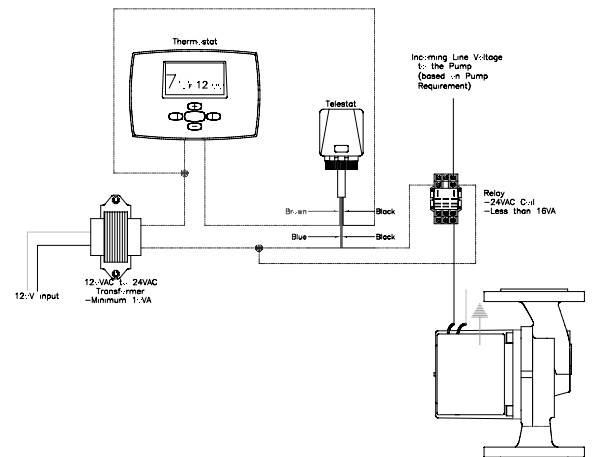
1 Thermal Actuator wired to Bell & Gossett relay circulator



3 Thermal Actuator wired to Erie relay box



2 Thermal Actuator wired to Taco relay circulator



4 Thermal Actuator wired to circulator via an external relay