



WO-500

Tag: \_\_\_\_\_

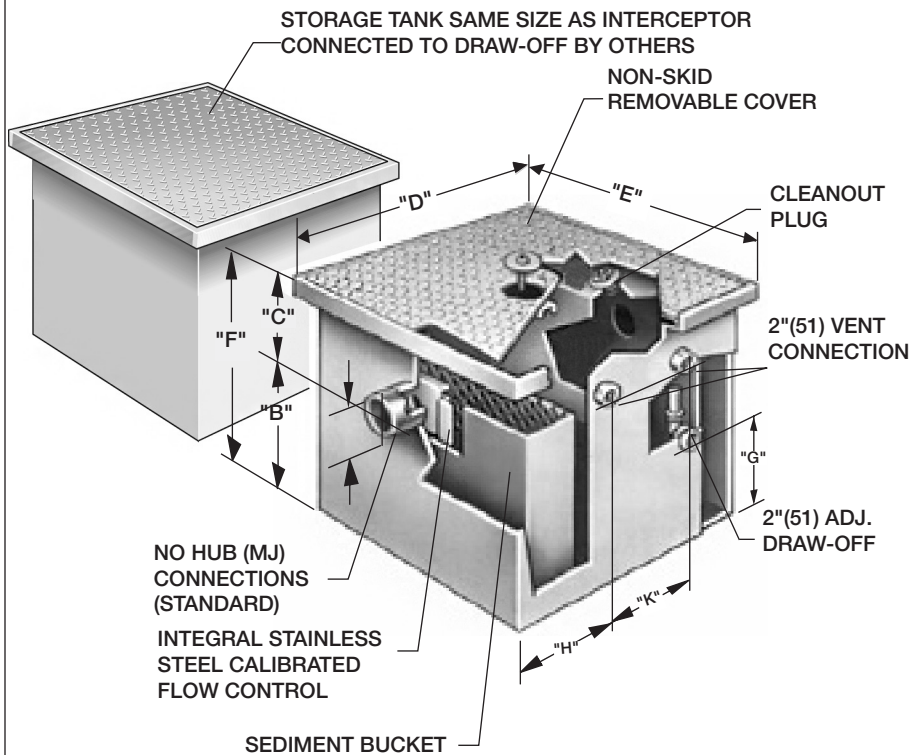
## Oil Interceptor with Secondary Oil Storage Tank

**SPECIFICATION:** Watts Drainage Products WO-500 epoxy coated inside and outside fabricated steel oil interceptor with flow rating of 15 to 75 GPM. Unit shall include sediment bucket, code approved deep seal trap, cover securing bolt(s), adjustable automatic draw-off assembly, double vent connections, removable stainless steel calibrated orifice plate and epoxy coated, non skid removeable cover. Supplied with secondary storage tank, (all interconnecting and vent piping by others).

**FUNCTION:** To separate lighter than water liquid pollutants from industrial waste.

Order Code: WO---

Ex. WO-515-F-6



### FLOW RATE (Select One)

Suffix	Description	
510	10 GPM	<input type="checkbox"/>
515	15 GPM	<input type="checkbox"/>
520	20 GPM	<input type="checkbox"/>
525	25 GPM	<input type="checkbox"/>
535	35 GPM	<input type="checkbox"/>
550	50 GPM	<input type="checkbox"/>
575	75 GPM	<input type="checkbox"/>

### Options (Select One or More)

Suffix	Description	
-E	Electronics	<input type="checkbox"/>
-DI	Dual Inlet	<input type="checkbox"/>
-F	Flange	<input type="checkbox"/>
-FC	Flange w/ Mem. Clamp	<input type="checkbox"/>
-IP	Injection Port (specify location)	<input type="checkbox"/>
-HDC	Heavy Duty Cover	<input type="checkbox"/>
-O	Inlet & Outlet other than standard	<input type="checkbox"/>
-SS	Stainless Steel	<input type="checkbox"/>
-T	Threaded Connections	<input type="checkbox"/>
-X	Extension as required	<input type="checkbox"/>
-XHDC	Extra Heavy Duty Cover (10,000 lbs.)	<input type="checkbox"/>

### Optional Inlet/Outlet Sizes (When -O is selected above)

Suffix	Description	
-2	2"(51) Inlet/Outlet	<input type="checkbox"/>
-3	3"(76) Inlet/Outlet	<input type="checkbox"/>
-4	4"(102) Inlet/Outlet	<input type="checkbox"/>
-6	6"(152) Inlet/Outlet	<input type="checkbox"/>

Interceptor Catalog Number	Flow Rate GPM	A	B	C	D	E	F	G	H	K	DI
		Inlet & Outlet	Base to Center	Top to Center	Length	Width	Height	Base to Center			Between Inlet Centers
WO-510	10	2"(51)	8 1/2"(216)	6"(152)	21 3/4"(552)	14"(356)	14 1/2"(368)	3 1/2"(89)	6"(152)	7"(178)	5"(127)
WO-515	15	2"(51)	10 1/2"(267)	6"(152)	22"(559)	15"(381)	16 1/2"(419)	4"(102)	7"(178)	7"(178)	5"(127)
WO-520	20	3"(76)	11 1/2"(292)	6"(152)	24"(610)	15 3/4"(400)	17 1/2"(443)	5"(127)	7"(178)	7"(178)	5 1/2"(140)
WO-525	25	3"(76)	12"(305)	6"(152)	26"(660)	16 1/2"(419)	18"(457)	6"(152)	7"(178)	7"(178)	5 1/2"(140)
WO-535	35	4"(102)	14"(356)	6"(152)	30"(762)	18"(457)	20"(508)	8"(203)	10"(254)	7"(178)	6 1/2"(165)
WO-550	50	4"(102)	16"(406)	6"(152)	32"(813)	22"(559)	22"(559)	9"(229)	10"(254)	7"(178)	6 1/2"(165)
WO-575	75	4"(102)	18 1/2"(470)	6"(152)	36"(914)	24"(610)	24 1/2"(623)	12"(305)	10"(254)	7"(178)	6 1/2"(165)

Job Name \_\_\_\_\_

Contractor \_\_\_\_\_

Job Location \_\_\_\_\_

Contractor's P.O. No. \_\_\_\_\_

Engineer \_\_\_\_\_

Representative \_\_\_\_\_

Watts product specifications in U.S. customary units and metric are approximate and are provided for reference only. For precise measurements, please contact Watts Technical Service. Watts reserves the right to change or modify product design, construction, specifications, or materials without prior notice and without incurring any obligation to make such changes and modifications on Watts products previously or subsequently sold.

USA: Tel: (800) 338-2581 • Fax: (828) 248-3929 • Watts.com

Canada: Tel: (905) 332-4090 • Fax: (905) 332-7068 • Watts.ca

Latin America: Tel: (52) 81-1001-8600 • Fax: (52) 81-8000-7091 • Watts.com

ES-WD-WO-500-CAN 1428



A Watts Water Technologies Company



© 2014 Watts