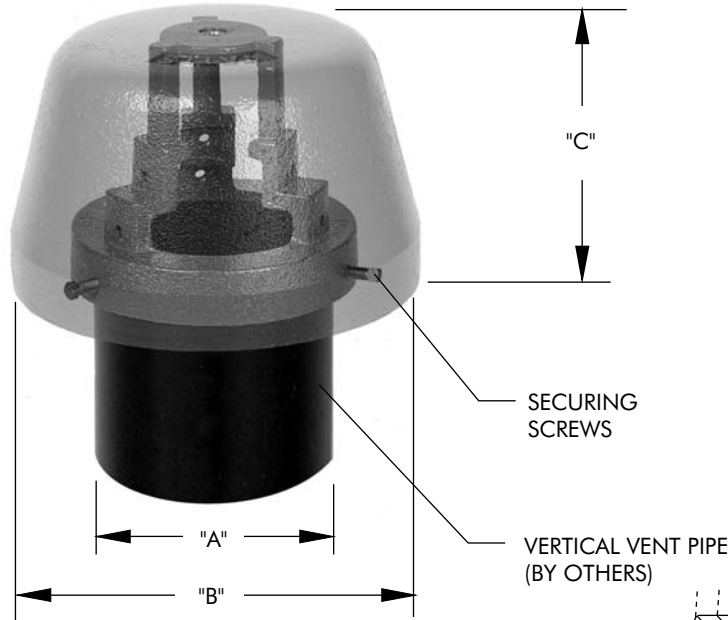


**SPECIFICATION:** Watts Drainage Products RD-680-VC baked epoxy cast iron vent cap with baked epoxy iron body and frost-proof opening.

**FUNCTION:** Vandal resistant design discourages the possibility of material being maliciously or carelessly inserted in vent pipe.



Order Code: RD-68  -VC-

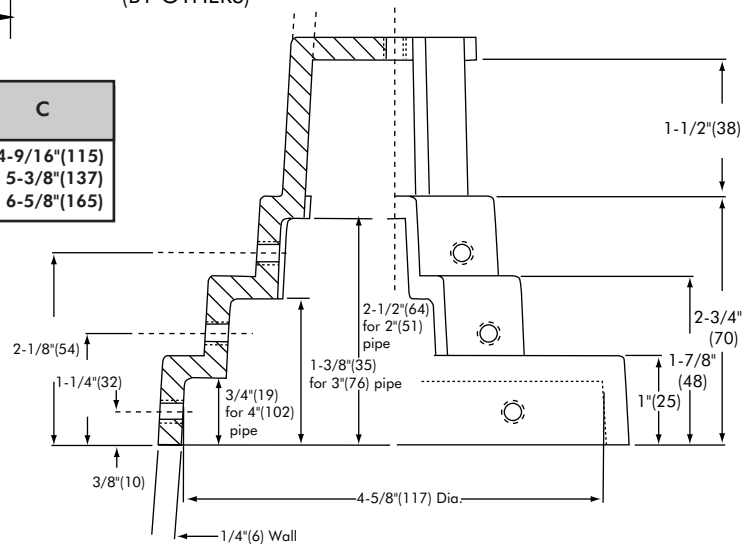
Ex. RD-68234-VC

Vent Pipe Size by Others		
Suffix	Description	
234	2"(51), 3"(76), 4"(102) Pipe Size	<input type="checkbox"/>
6	6"(152) Pipe Size	<input type="checkbox"/>
8	8"(152) Pipe Size	<input type="checkbox"/>

Options (Select One or More)		
Suffix	Description	
-6	Vandal Proof	<input type="checkbox"/>
-12	Galvanized Body	<input type="checkbox"/>
-13	All Galvanized	<input type="checkbox"/>

Please note: New universal body for RD-680-VC for vent pipe sizes from 2"(51) to 4"(102).

Part #	A (Pipe Size)	B	C
RD-68234-VC	2"(51), 3"(76), 4"(102)	7-3/8"(187)	4-9/16"(115)
RD-686-VC	6"(152)	10-1/2"(267)	5-3/8"(137)
RD-688-VC	8"(203)	14"(356)	6-5/8"(165)



**Figure 1**

**NOTE:** Use Figure 1 to determine how far pipe must extend from roof for varying diameters.

Job Name \_\_\_\_\_ Contractor \_\_\_\_\_

Job Location \_\_\_\_\_ Contractor's P.O. No. \_\_\_\_\_

Engineer \_\_\_\_\_ Representative \_\_\_\_\_

WATTS Drainage reserves the right to modify or change product design or construction without prior notice and without incurring any obligation to make similar changes and modifications to products previously or subsequently sold. See your WATTS Drainage representative for any clarification. Dimensions are subject to manufacturing tolerances.