



OI-700

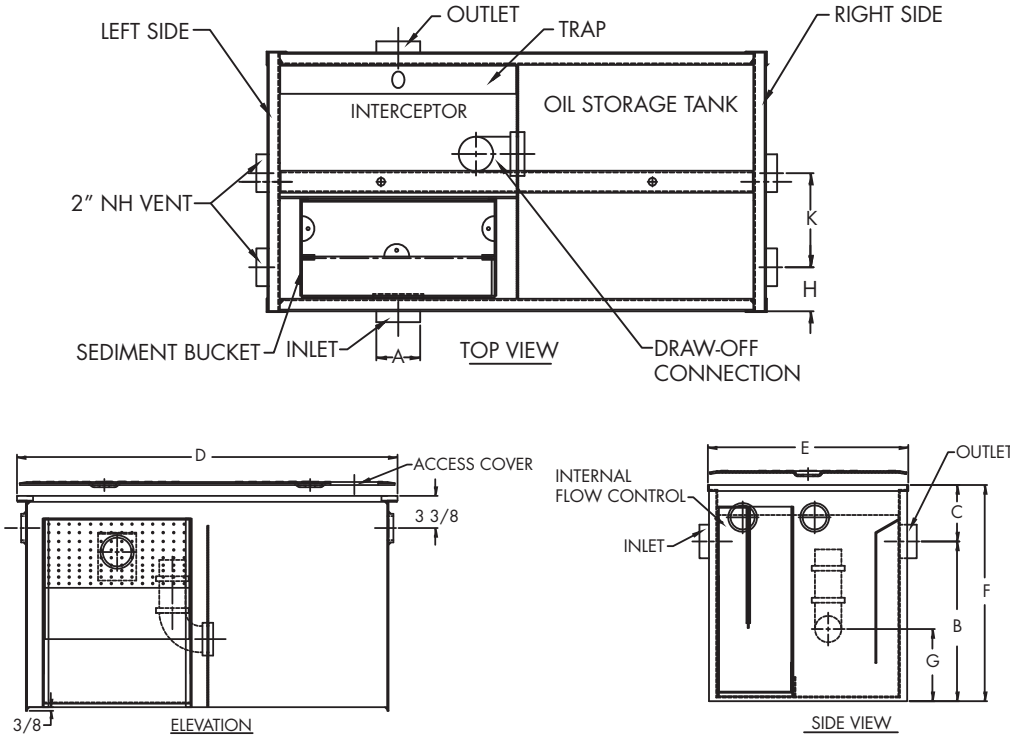
Tag: _____

Oil Interceptor with Internal Storage Tank

SPECIFICATION: Watts Drainage OI-700 Series recessed or floor mounted epoxy coated steel oil interceptor with integral storage tank, gasketed epoxy coated steel skid-proof cover secured with hex head center bolt(s), deep seal trap with cleanout, draw-off connection and dual vent connections, sediment bucket, integral stainless steel flow control plate, and no hub (standard) connections.

NOTICE

Check local plumbing code for oil storage requirement prior to installation.



Flow Rate (Select One)		
Suffix	Description	
10	10 GPM	<input type="checkbox"/>
15	15 GPM	<input type="checkbox"/>
20	20 GPM	<input type="checkbox"/>
25	25 GPM	<input type="checkbox"/>
35	35 GPM	<input type="checkbox"/>
50	50 GPM	<input type="checkbox"/>
75	75 GPM	<input type="checkbox"/>
100	100 GPM	<input type="checkbox"/>
125	125 GPM	<input type="checkbox"/>
150	150 GPM	<input type="checkbox"/>
200	200 GPM	<input type="checkbox"/>
250	250 GPM	<input type="checkbox"/>
300	300 GPM	<input type="checkbox"/>
350	350 GPM	<input type="checkbox"/>
400	400 GPM	<input type="checkbox"/>
450	450 GPM	<input type="checkbox"/>
500	500 GPM	<input type="checkbox"/>

Options (Select One or More)		
Suffix	Description	
-DI	Dual Inlet	<input type="checkbox"/>
-E	Electronic	<input type="checkbox"/>
-F	Flange	<input type="checkbox"/>
-FC	Flange w/Membrane Clamp	<input type="checkbox"/>
-HDC	Heavy Duty Cover (1000 lbs.)	<input type="checkbox"/>
-O	Inlet & Outlet other than Standard Size	<input type="checkbox"/>
-SS	Stainless Steel	<input type="checkbox"/>
-THD	Threaded Connection	<input type="checkbox"/>
-X	Extension as required	<input type="checkbox"/>
-XHD	Extra Heavy Duty (10,000 lbs.) Traffic Cover	<input type="checkbox"/>

MODEL NO.	FLOW RATE GPM	TANK CAPACITY GAL.	A	B	C	D	F	F	G	H	K	J
			INLET & OUTLET	BASE TO CENTER	TOP TO CENTER	LENGTH	WIDTH	HEIGHT				
OI-710	10	6	2" (51)	8 1/2" (216)	6" (152)	24" (610)	18" (457)	14 1/2" (368)	3" (76)	4 1/2" (114)	5 1/2" (140)	6" (152)
OI-715	15	6	2" (51)	12 1/2" (318)	6" (152)	33 3/4" (857)	20 7/8" (530)	18 1/2" (470)	5" (127)	4 1/2" (114)	7 1/2" (191)	9" (229)
OI-720	20	8	3" (76)	14 1/2" (368)	6" (152)	39 3/4" (1010)	20 7/8" (530)	20 1/2" (521)	6" (152)	4 1/2" (114)	7 1/2" (191)	10 1/2" (285)
OI-725	25	55	3" (76)	16 1/2" (419)	6" (152)	39 3/4" (1010)	20 7/8" (530)	22 1/2" (572)	7" (178)	4 1/2" (114)	7 1/2" (191)	10 1/2" (285)
OI-735	35	55	4" (102)	14 1/2" (368)	6" (152)	49 3/4" (1264)	32 7/8" (835)	20 1/2" (521)	6" (152)	12" (305)	6" (152)	13" (329)
OI-750	50	125	4" (102)	18 1/2" (470)	6" (152)	49 3/4" (1264)	32 7/8" (835)	24 1/2" (622)	8" (203)	12" (305)	6" (152)	13" (329)
OI-775	75	125	4" (102)	26 1/2" (673)	6" (152)	49 3/4" (1264)	40 7/8" (1038)	32 1/2" (826)	16" (406)	12" (305)	12" (305)	13" (329)
OI-7100	100	250	4" (102)	24" (610)	10" (254)	72" (1829)	54" (1372)	34" (884)	24" (610)	20" (508)	13" (330)	22 1/2" (572)
OI-7150	150	250	4" (102)	29" (737)	10" (254)	76" (1930)	60" (1524)	39" (991)	29" (737)	22" (559)	15" (381)	19" (483)
OI-7200	200	400	4" (102)	31" (787)	10" (254)	86" (2184)	69" (1753)	41" (1041)	31" (787)	26" (660)	18" (457)	22 1/2" (572)
OI-7250	250	400	4" (102)	37" (940)	10" (254)	90" (2286)	74" (1880)	47" (1194)	37" (940)	28" (680)	20" (508)	22 1/2" (572)
OI-7300	300	400	6" (152)	38" (965)	10" (254)	96" (2438)	76" (1930)	48" (1219)	38" (965)	27" (688)	20" (508)	21 1/2" (546)
OI-7350	350	700	6" (152)	39" (991)	10" (254)	100" (2540)	79" (2007)	49" (1245)	39" (991)	28" (711)	21" (533)	23 1/2" (597)
OI-7400	400	700	6" (152)	42" (1067)	10" (254)	110" (2794)	83" (2108)	52" (1321)	42" (1067)	30" (782)	23" (584)	22 3/4" (578)
OI-7500	500	700	6" (152)	53" (1346)	10" (254)	120" (3048)	91" (2311)	63" (1800)	53" (1346)	32" (813)	25" (635)	20 3/4" (527)

Job Name _____
 Job Location _____
 Engineer _____

Contractor _____
 Contractor's P.O. No. _____
 Representative _____

Watts product specifications in U.S. customary units and metric are approximate and are provided for reference only. For precise measurements, please contact Watts Technical Service. Watts reserves the right to change or modify product design, construction, specifications, or materials without prior notice and without incurring any obligation to make such changes and modifications on Watts products previously or subsequently sold.



USA: Tel: (800) 338-2581 • Fax: (828) 248-3929 • Watts.com
Canada: Tel: (905) 332-4090 • Fax: (905) 332-7068 • Watts.ca
Latin America: Tel: (52) 81-1001-8600 • Fax: (52) 81-8000-7091 • Watts.com