



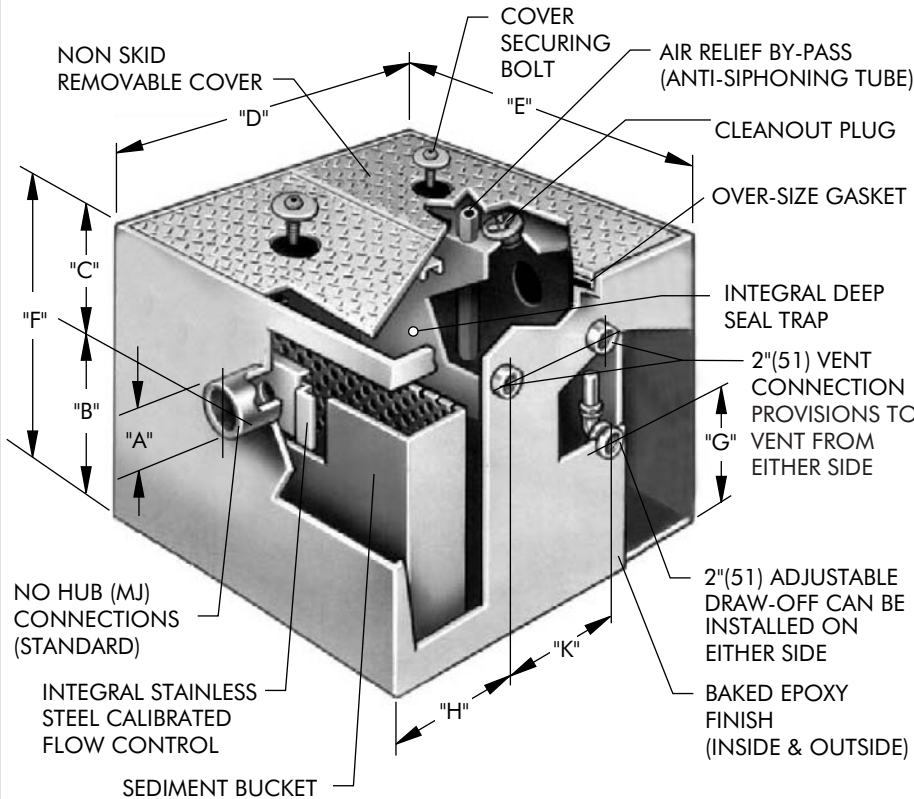
# OI-400

Tag: \_\_\_\_\_

## Large Capacity Oil Interceptor

**SPECIFICATION:** Watts Drainage Products OI-400 epoxy coated inside and outside fabricated steel oil interceptor with flow rating of 100 to 600 GPM. Unit shall include sediment bucket, code approved deep seal trap, cover securing bolt(s), adjustable automatic draw-off assembly, double vent connections, stainless steel calibrated orifice plate and steel epoxy coated non-skid rectangular removable cover.

**FUNCTION:** To separate lighter than water liquid pollutants from industrial waste. Requires separate vented waste storage tank by others.



Order Code: OI-  -  -

**Ex. OI-410-F-T**

Flow Rate (Select One)		
Suffix	Description	
410	100 GPM	<input type="checkbox"/>
415	150 GPM	<input type="checkbox"/>
420	200 GPM	<input type="checkbox"/>
425	250 GPM	<input type="checkbox"/>
430	300 GPM	<input type="checkbox"/>
435	350 GPM	<input type="checkbox"/>
440	400 GPM	<input type="checkbox"/>
450	500 GPM	<input type="checkbox"/>
460	600 GPM	<input type="checkbox"/>

Options (Select One or More)		
Suffix	Description	
-DI	Dual Inlet	<input type="checkbox"/>
-F	Flange	<input type="checkbox"/>
-FC	Flange w/ Mem. Clamp	<input type="checkbox"/>
-HDC	Heavy Duty Cover	<input type="checkbox"/>
-IP	Injection Port (specify location)	<input type="checkbox"/>
-O	Inlet & Outlet other than standard	<input type="checkbox"/>
-SS	Stainless Steel	<input type="checkbox"/>
-T	Threaded Connections	<input type="checkbox"/>

Optional Inlet/Outlet Sizes (When -O is selected above)		
Suffix	Description	
-4	4"(102) Inlet/Outlet	<input type="checkbox"/>
-6	6"(152) Inlet/Outlet	<input type="checkbox"/>

**NOTE: OI-410 two piece cover, OI-415 to OI-460 three piece cover**

Interceptor Catalog Number	Flow Rate GPM	A Inlet & Outlet	B Base to Center	C Top to Center	D Length	E Width	F Height	G Base to Center	H	K	DI Between Inlet Centres
OI-410	100	4"(102)	24"(610)	10"(254)	54"(1372)	36"(914)	34"(864)	17-1/2"(445)	20"(508)	13"(330)	6-1/2"(165)
OI-415	150	4"(102)	29"(737)	10"(254)	60"(1524)	38"(965)	39"(991)	22-1/2"(572)	22"(559)	15"(381)	6-1/2"(165)
OI-420	200	4"(102)	31"(787)	10"(254)	69"(1753)	43"(1092)	41"(1041)	24-1/2"(622)	26"(660)	18"(457)	6-1/2"(165)
OI-425	250	4"(102)	37"(940)	10"(254)	74"(1880)	45"(1143)	47"(1194)	30"(762)	26"(660)	20"(508)	6-1/2"(165)
OI-430	300	6"(152)	38"(965)	10"(254)	76"(1930)	48"(1219)	48"(1219)	30-1/2"(775)	27"(686)	20"(508)	9"(229)
OI-435	350	6"(152)	39"(991)	10"(254)	79"(2007)	50"(1270)	49"(1245)	31-1/2"(800)	28"(711)	21"(533)	9"(229)
OI-440	400	6"(152)	42"(1067)	10"(254)	83"(2108)	55"(1397)	52"(1321)	34-1/2"(876)	30"(762)	23"(584)	9"(229)
OI-450	500	6"(152)	53"(1346)	10"(254)	91"(2311)	60"(1524)	63"(1600)	45-1/2"(1156)	32"(813)	25"(635)	9"(229)
OI-460	600	8"(203)	60"(1524)	10"(254)	100"(2540)	72"(1829)	70"(1778)	52"(1321)	34"(864)	27"(686)	12"(305)

Job Name \_\_\_\_\_ Contractor \_\_\_\_\_

Job Location \_\_\_\_\_ Contractor's P.O. No. \_\_\_\_\_

Engineer \_\_\_\_\_ Representative \_\_\_\_\_

WATTS Drainage reserves the right to modify or change product design or construction without prior notice and without incurring any obligation to make similar changes and modifications to products previously or subsequently sold. See your WATTS Drainage representative for any clarification. Dimensions are subject to manufacturing tolerances.



CANADA: 5435 North Service Road, Burlington, ON, L7L 5H7 TEL: 905-332-6718 TOLL-FREE: 1-888-208-8927 Website: www.wattsdrainage.ca

