



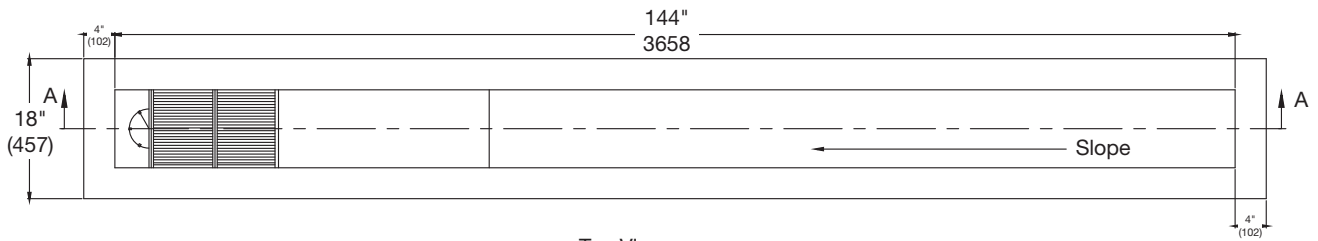
LI-12-LT

Stainless Steel Lint Trough

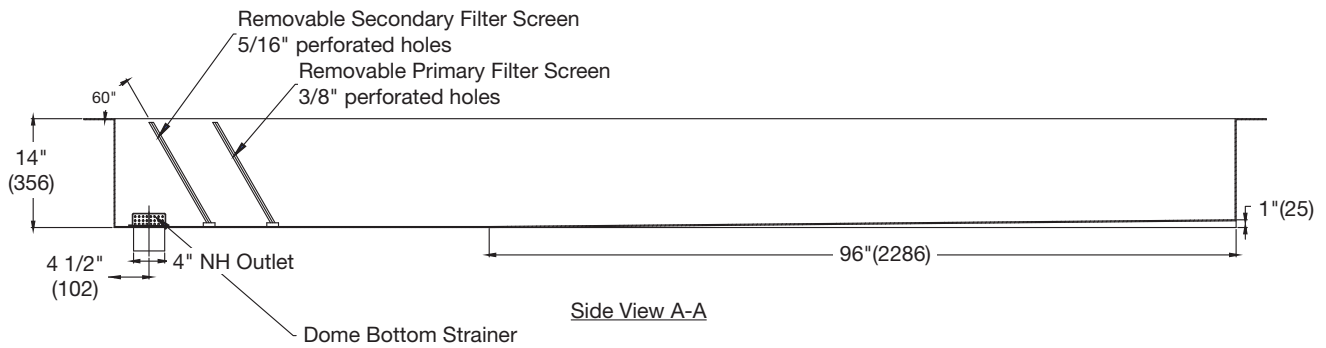
Tag: \_\_\_\_\_

**SPECIFICATION:** Watts Drainage LI-12-LT type 304 stainless steel lint trough with removable stainless steel filter screens, perforated stainless steel dome bottom strainer, and 4"(102) no hub bottom outlet.

		Options
Suffix	Description	
-316	Type 316L Stainless Steel	<input type="checkbox"/>



Top View



Side View A-A

**NOTICE**

The information contained herein is not intended to replace the full product installation and safety information available or the experience of a trained product installer. You are required to thoroughly read all installation instructions and product safety information before beginning the installation of this product

Job Name \_\_\_\_\_

Contractor \_\_\_\_\_

Job Location \_\_\_\_\_

Contractor's P.O. No. \_\_\_\_\_

Engineer \_\_\_\_\_

Representative \_\_\_\_\_

Watts product specifications in U.S. customary units and metric are approximate and are provided for reference only. For precise measurements, please contact Watts Technical Service. Watts reserves the right to change or modify product design, construction, specifications, or materials without prior notice and without incurring any obligation to make such changes and modifications on Watts products previously or subsequently sold.



USA: Tel: (800) 338-2581 • Fax: (828) 248-3929 • Watts.com

Canada: Tel: (905) 332-4090 • Fax: (905) 332-7068 • Watts.ca

Latin America: Tel: (52) 81-1001-8600 • Fax: (52) 81-8000-7091 • Watts.com