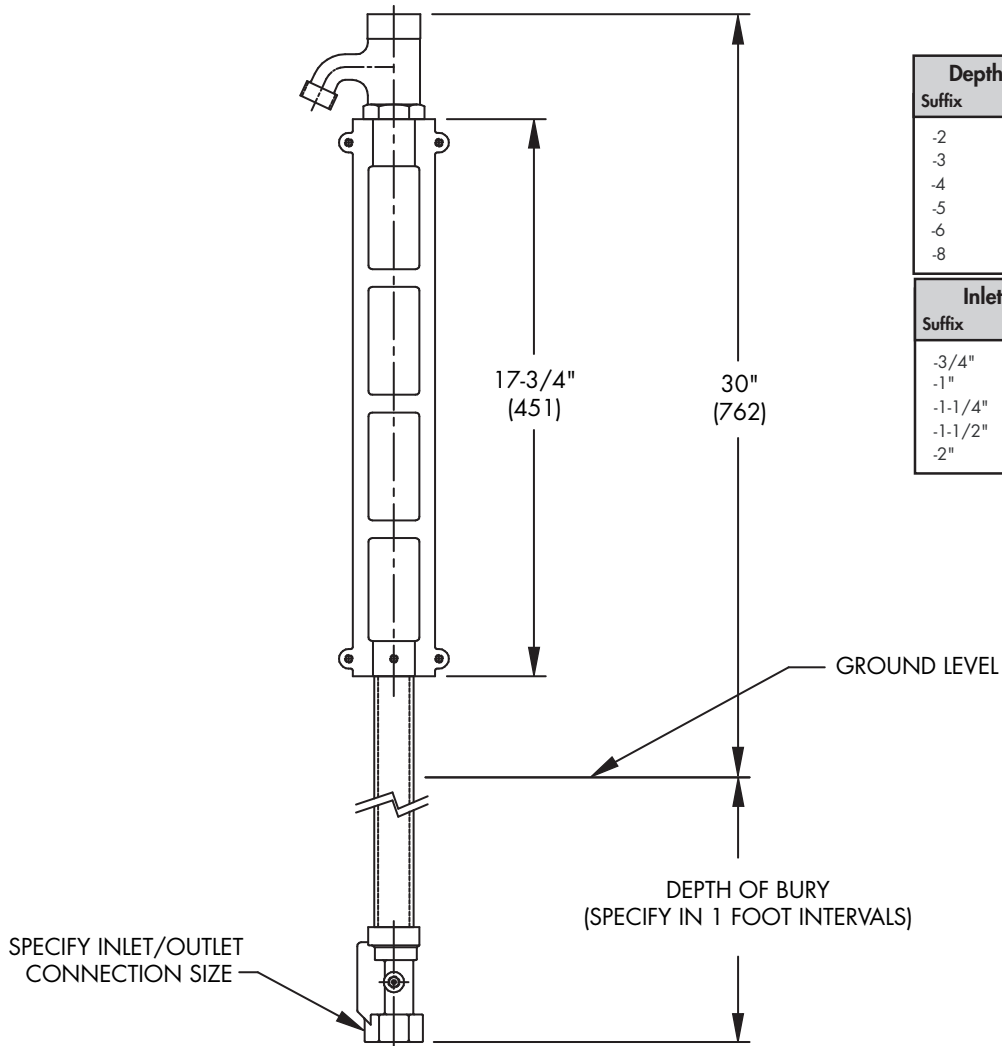




Tag: **HY-600**

Non-Freeze Post Hydrant

SPECIFICATION: Watts Drainage HY-600 non-freeze key operated post hydrant with decorative epoxy coated cast iron housing, all bronze head, seat casting and internal working parts, galvanized casing, and loose key.



Depth of Bury (Select One)		
Suffix	Description	
-2	2'(610) Depth	<input type="checkbox"/>
-3	3'(914) Depth	<input type="checkbox"/>
-4	4'(1219) Depth	<input type="checkbox"/>
-5	5'(1524) Depth	<input type="checkbox"/>
-6	6'(1829) Depth	<input type="checkbox"/>
-8	8'(2438) Depth	<input type="checkbox"/>

Inlet/Outlet Size (Select One)		
Suffix	Description	
-3/4"	3/4"(19) Connection Size	<input type="checkbox"/>
-1"	1"(25) Connection Size	<input type="checkbox"/>
-1-1/4"	1-1/4"(32) Connection Size	<input type="checkbox"/>
-1-1/2"	1-1/2"(38) Connection Size	<input type="checkbox"/>
-2"	2"(51) Connection Size	<input type="checkbox"/>

Job Name _____ Contractor _____

Job Location _____ Contractor's P.O. No. _____

Engineer _____ Representative _____

WATTS Drainage reserves the right to modify or change product design or construction without prior notice and without incurring any obligation to make similar changes and modifications to products previously or subsequently sold. See your WATTS Drainage representative for any clarification. Dimensions are subject to manufacturing tolerances.



Specification Drainage Products

USA: 100 Watts Road, Spindale, NC, 28160-2298; TEL: 828-288-2179 TOLL-FREE: 1-800-338-2581 www.watts.com