



GI-100-AH

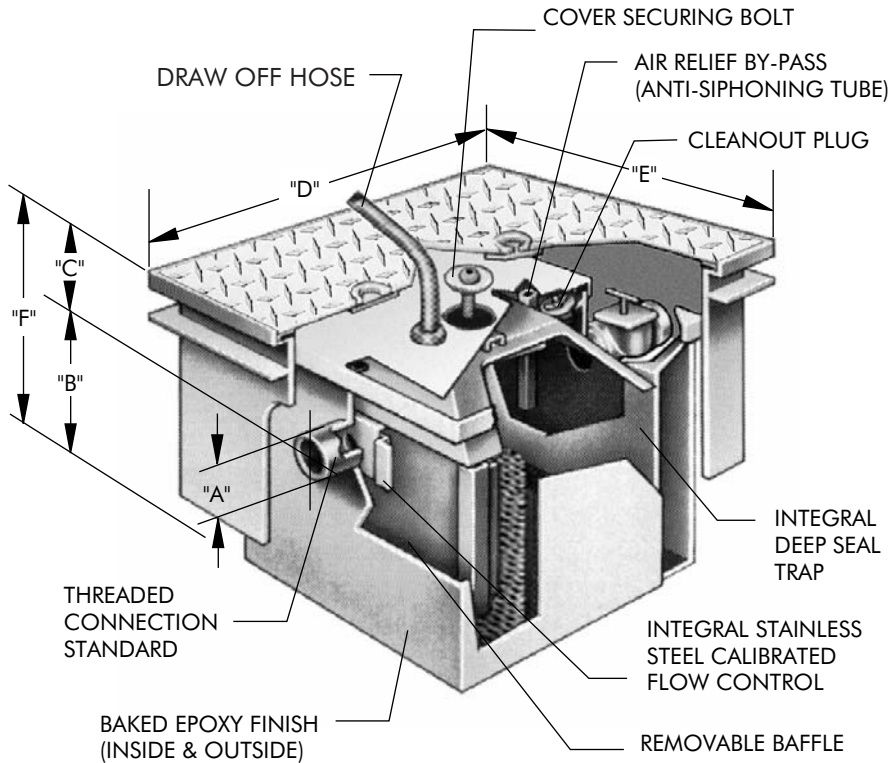
Tag: _____

Semi-Automatic Draw-Off Grease Interceptor with Access Housing

SPECIFICATION: Watts Drainage Products GI-100-AH epoxy coated inside and outside fabricated steel grease interceptor with flow rating of 7 GPM to 75 GPM and grease capacity of 14 lbs to 150 lbs. Unit shall include removable baffle, deep seal trap, non-removable stainless steel calibrated orifice plate and cover-all cover with low pressure grease accumulating chamber and draw off hose.

Entire unit shall be housed in epoxy coated fabricated steel housing with epoxy coated non-skid cover with adjustable interceptor carrier brackets and integral anchoring flange.

Order Code: GI--AH--



Ex. GI-107-AH-SS

Flow Rate (Select One)		
Suffix	Description	
107	7 GPM	<input type="checkbox"/>
110	10 GPM	<input type="checkbox"/>
115	15 GPM	<input type="checkbox"/>
120	20 GPM	<input type="checkbox"/>
125	25 GPM	<input type="checkbox"/>
135	35 GPM	<input type="checkbox"/>
150	50 GPM	<input type="checkbox"/>
175	75 GPM	<input type="checkbox"/>

Options (Select One or More)		
Suffix	Description	
-HDC	Heavy Duty Cover	<input type="checkbox"/>
-O	Inlet & Outlet other than standard	<input type="checkbox"/>
-SS	Stainless Steel	<input type="checkbox"/>

Optional Inlet/Outlet Sizes (When -O is selected above)		
Suffix	Description	
-2	2"(51) Inlet/Outlet	<input type="checkbox"/>
-3	3"(76) Inlet/Outlet	<input type="checkbox"/>
-4	4"(102) Inlet/Outlet	<input type="checkbox"/>
-6	6"(152) Inlet/Outlet	<input type="checkbox"/>

Cubic Capacity of Fixtures in Inches	Interceptor Catalog Number	Grease Capacity Lbs	Flow Rate GPM	A	B	C	D	E	F
				Inlet & Outlet	Base to Center	Top to Center	Length	Width	Height
up to 2150	GI-107-AH	14	7	2"(51)	V	V	29-1/16"(738)	17-7/16"(443)	13-1/2"(343)
2151 to 3000	GI-110-AH	20	10	2"(51)	A	A	35-1/16"(891)	17-7/16"(443)	13-1/2"(343)
3001 to 4600	GI-115-AH	30	15	2"(51)	R	R	37-15/16"(964)	22-5/16"(567)	13-1/2"(343)
4601 to 6150	GI-120-AH	40	20	3"(76)	I	I	37-15/16"(964)	25-5/16"(643)	13-1/2"(343)
6150 to 7700	GI-125-AH	50	25	3"(76)	A	A	37-15/16"(964)	25-5/16"(643)	13-1/2"(343)
7701 to 10750	GI-135-AH	70	35	4"(102)	B	B	49-15/16"(1268)	30-5/16"(770)	13-1/2"(343)
10751 to 15400	GI-150-AH	100	50	4"(102)	L	L	49-15/16"(1268)	30-5/16"(770)	13-1/2"(343)
15401 to 23000	GI-175-AH	150	75	4"(102)	E	E	57-15/16"(1472)	30-5/16"(770)	13-1/2"(343)

Job Name _____ Contractor _____

Job Location _____ Contractor's P.O. No. _____

Engineer _____ Representative _____

WATTS Drainage reserves the right to modify or change product design or construction without prior notice and without incurring any obligation to make similar changes and modifications to products previously or subsequently sold. See your WATTS Drainage representative for any clarification. Dimensions are subject to manufacturing tolerances.



CANADA: 5435 North Service Road, Burlington, ON, L7L 5H7 TEL: 905-332-6718 TOLL-FREE: 1-888-208-8927 Website: www.wattsdrainage.ca

