

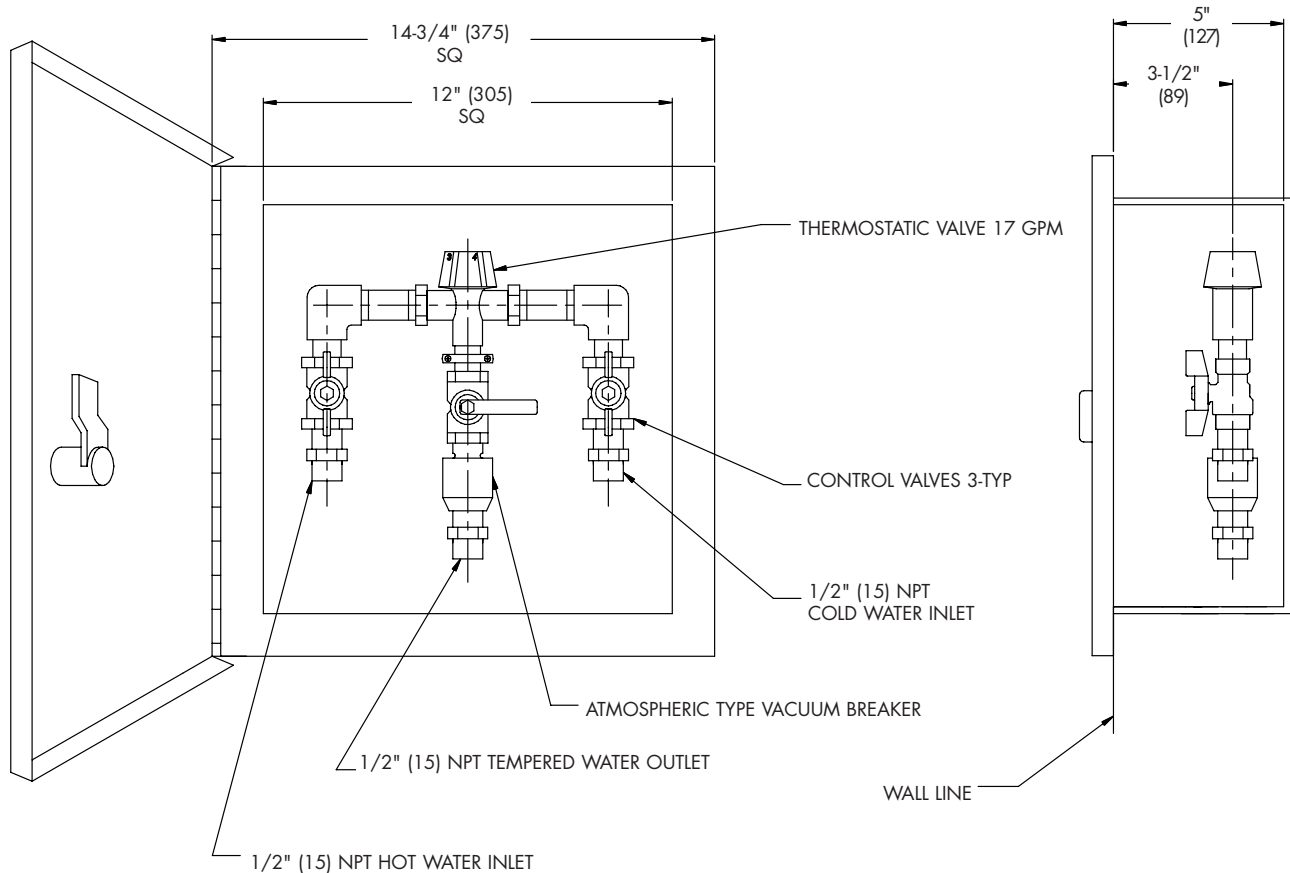
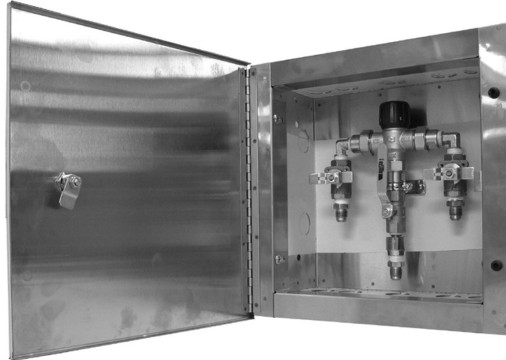


FS-890

Tag: \_\_\_\_\_

Water Supply Control Box

**SPECIFICATION:** Watts Drainage Products FS-890 stainless steel water supply control box for sanitary can wash and flushing rim floor drains, with thermostatic mixing valve, 1/2" (15) NPT outlet connection, 1/2" (15) NPT hot and cold water inlet connections, integral atmospheric vacuum breaker, and hinged locking door.



Job Name \_\_\_\_\_ Contractor \_\_\_\_\_

Job Location \_\_\_\_\_ Contractor's P.O. No. \_\_\_\_\_

Engineer \_\_\_\_\_ Representative \_\_\_\_\_

WATTS Drainage reserves the right to modify or change product design or construction without prior notice and without incurring any obligation to make similar changes and modifications to products previously or subsequently sold. See your WATTS Drainage representative for any clarification. Dimensions are subject to manufacturing tolerances.



Specification Drainage Products

USA: 100 Watts Road, Spindale, NC, 28160-2298; TEL: 828-288-2179 TOLL-FREE: 1-800-338-2581 www.watts.com