



FD-490-F-4
Tag: _____

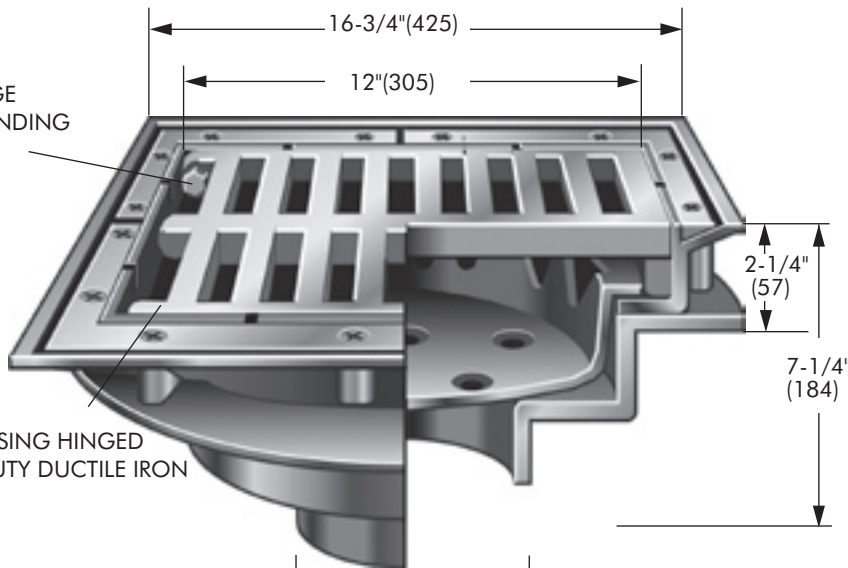
**All Cast Iron Parking
Area Structure Drain with
Heavy Duty Grate and Bucket**

SPECIFICATION: Watts Drainage Products FD-490-F Parking Structure Drain, oven cured epoxy coated cast iron body with top membrane clamping flange, anti-ponding device, aluminum sediment bucket and heavy duty ductile iron secured self-closing hinged grate, non-shearing stainless steel hinge pins.

FUNCTION: Recommended for installation in durable parking structures, etc., where a large capacity drain with top membrane clamping flange and the safety of a secured hinged grate is required.

Order Code: **FD-49** **F-4-**

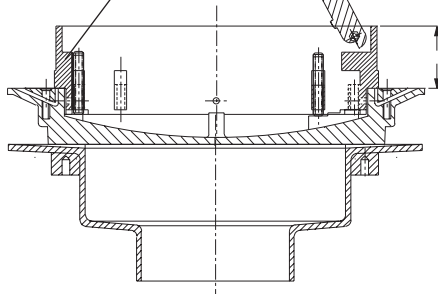
DOUBLE
DRAINAGE
ANTI-PONDING
SLOTS



SELF CLOSING HINGED
HEAVY DUTY DUCTILE IRON
GRATE

PIPE SIZE
3"(76), 4"(102), 6"(152)
8"(203), 10"(254)
NH (MJ) only

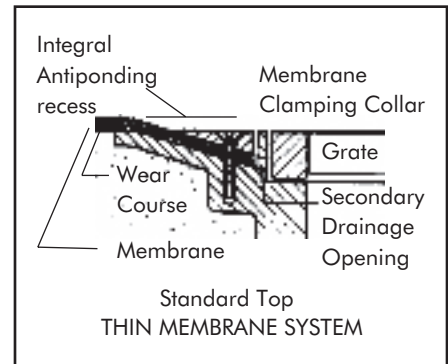
OPTIONAL (-ATE)
ADJUSTABLE TOP
EXTENSION SHOWN
65mm or 80 mm



Ex. **FD-493-F-4**

Pipe Sizing (Select One)		
Suffix	Description	
3	3"(76) Pipe Size	<input type="checkbox"/>
4	4"(102) Pipe Size	<input type="checkbox"/>
6	6"(152) Pipe Size	<input type="checkbox"/>
8	8"(203) Pipe Size	<input type="checkbox"/>
10	10"(254) Pipe Size	<input type="checkbox"/>

Options (Select One or More)		
Suffix	Description	
-6	Vandal Proof	<input type="checkbox"/>
-10	Secured Top c/w Phillips screws	<input type="checkbox"/>
-ATE-65	Adjustable Top Extension 65mm	<input type="checkbox"/>
-ATE-80	Adjustable Top Extension 80mm	<input type="checkbox"/>



Load Rating & Free Area

Suffix	Load Rating	Free Area Sq. In.
F-4	*XHD	41

* The load classifications are in accordance with the American National Standards ASME A112.21.1M ASME Ratings are as follows:
XHD - Safe Live Load 7500-10000lbs. (3375-4500kg)
The above categories are given as a guide only. Please consult factory.

Job Name _____ Model No. _____
Job Location _____ Contractor _____
Engineer _____ Representative _____



Specification Drainage Products

WATTS Drainage reserves the right to modify or change product design or construction without prior notice and without incurring any obligation to make similar changes and modifications to products previously or subsequently sold. See your WATTS Drainage representative for any clarification. Dimensions are subject to manufacturing tolerances.

CANADA: 5435 North Service Road, Burlington, ON, L7L 5H7 TEL: 905-332-6718 TOLL-FREE: 1-888-208-8927 Website: www.wattscanada.ca

