

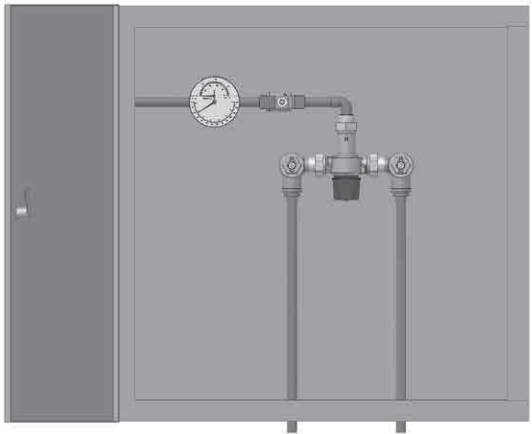
**For Non-Health Hazard Applications**

Job Name \_\_\_\_\_ Contractor \_\_\_\_\_  
 Job Location \_\_\_\_\_ Approval \_\_\_\_\_  
 Engineer \_\_\_\_\_ Contractor's P.O. No. \_\_\_\_\_  
 Approval \_\_\_\_\_ Representative \_\_\_\_\_

# LEAD FREE\*

## HydroGuard® Master Tempering Valve Supply Fixture

### Series LM490 Bottom Inlets/Side Outlet — Recessed Cabinet



**Features**

- Paraffin-based advanced thermal actuation technology to sense and adjust outlet temperature
- Dirt and lime resistant poppet and seat design
- Virtual shutoff if supply pressure fails
- Stainless steel or white painted cabinets
- Factory tested valve and piping
- Triple-duty checkstops with filters, dial-thermometer, ball valve
- Rough bronze and chrome finishes



**Specifications**

Connections . . . . . 1/2" (15 mm) inlets and outlet  
 Maximum Hot Water Supply Temperature . . . . . 200°F (93°C)  
 Minimum Hot Water Supply Temperature . . . . . 5°F (3°C) above set point  
 Minimum Flow\* . . . . . 0.5 gpm (1.9 lpm)  
 Maximum Operating Pressure . . . . . 150 psi (1034 kPa)  
 Temperature Adjustment Range . . . . . 90°F – 160°F (32°C – 71°C)  
 Listing/Compliance (Valve Only) . . . . . ASSE 1017, IAPMO UPC and CSA B125

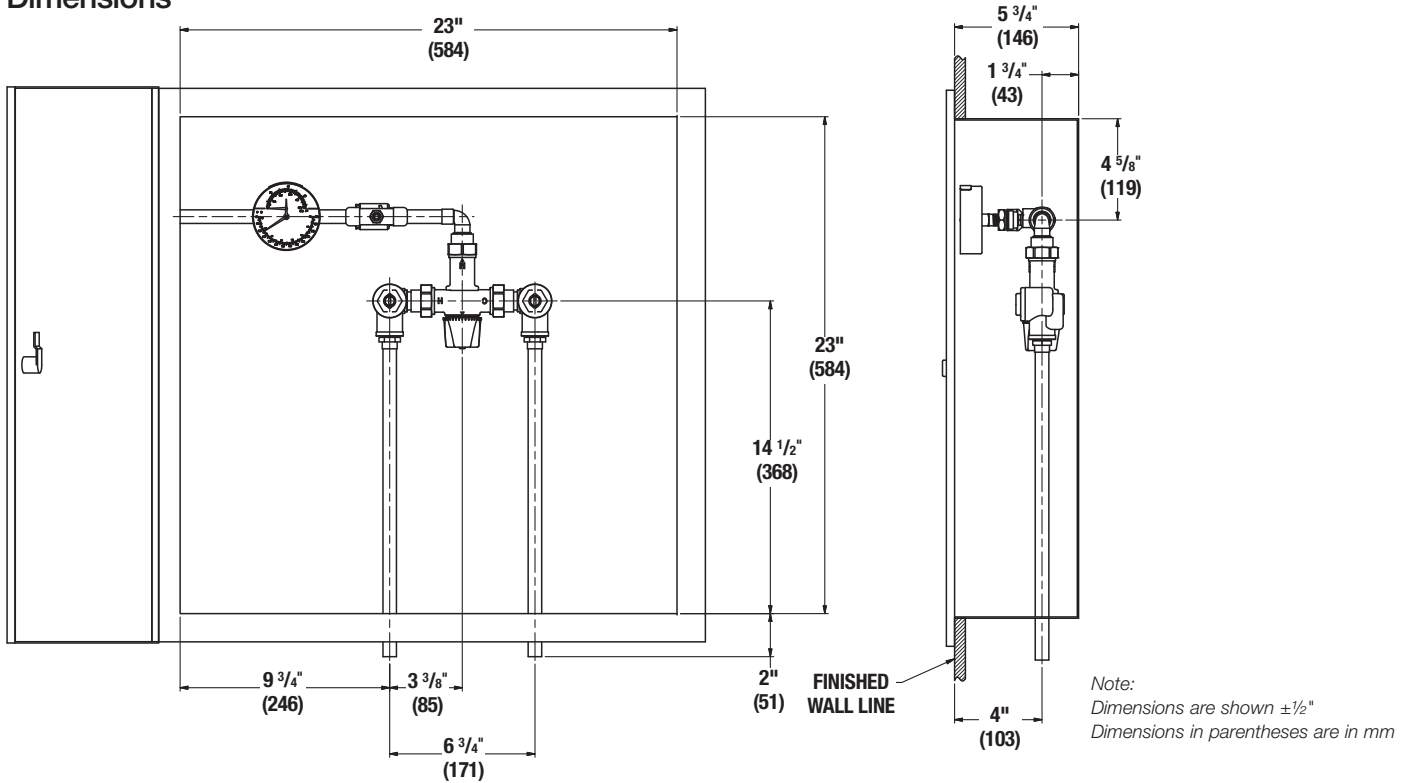
\* When tested in accordance with ASSE 1017

**Capacity**

Flow Capacity at 50-50 Mixed Ratio							
Pressure Differential							
Valve	Cv	5 psi	10 psi	20 psi	30 psi	45 psi	60 psi
		(35 kPa)	(69 kPa)	(138 kPa)	(207 kPa)	(310 kPa)	(414 kPa)
<b>LM490</b>	3.42	7.6 gpm (29 lpm)	11.0 gpm (42 lpm)	15.0 gpm (57 lpm)	19.0 gpm (72 lpm)	23.0 gpm (87 lpm)	27.0 gpm (102 lpm)

Powers product specifications in U.S. customary units and metric are approximate and are provided for reference only. For precise measurements, please contact Powers Technical Service. Powers reserves the right to change or modify product design, construction, specifications, or materials without prior notice and without incurring any obligation to make such changes and modifications on Powers products previously or subsequently sold.

## Dimensions



## Ordering Information

L M 4 9 0 G S

Valve	Order Code	View Port	Order Code
23 gpm (87 lpm)	LM490	None	0
		Window	W
Finish		Alarm System	
Rough Bronze	A	None	0
Chrome Plated	C	AquaSentry® 2 Alarm System	4
Piping Inlets/Outlet		Option	
Bottom/Side	G	None	0
		Cold Water Bypass	2
		T/P Gauge on Inlets	4
		C/W Bypass & T/P Gauge on Inlets	6
Cabinet Style		Temperature Range	
Stainless steel, Recessed	N	Standard 90° – 160°F (32° – 71°C)	S
Painted, Recessed	R		

## Typical Specification

Cabinet Supply Fixture (CSF) shall be factory assembled and tested and include a stainless steel or painted steel cabinet. CSF shall feature a HydroGuard® LM490 Series Master-Tempering Valve with advanced paraffin-based actuation technology. CSF shall also include copper piping, ball valve(s) and temperature/pressure gauge for diagnostics. The tempering valve shall have union checkstops, an outlet temperature range of 90°F – 160°F (32°C – 71°C) (with lockable means), and an approach temperature of 5°F (3°C). Valve shall be ASSE 1017, IAPMO UPC listed and CSA certified. Minimum flow to ASSE 1017 shall be 0.5 gpm (1.9 lpm).

Valve shall be a Powers model \_\_\_\_\_. All alternatives must have written approval prior to bidding.

# POWERS™

A WATTS Brand

USA: Tel: (800) 669-5430 • Fax: (847) 229-0526 • PowersControls.com

Canada: Tel: (905) 332-4090 • Fax: (905) 332-7068 • PowersControls.ca

Latin America: Tel: (52) 81-1001-8600 • PowersControls.com