

# For Non-Health Hazard Applications

Job Name \_\_\_\_\_  
 Job Location \_\_\_\_\_  
 Engineer \_\_\_\_\_  
 Approval \_\_\_\_\_

Contractor \_\_\_\_\_  
 Approval \_\_\_\_\_  
 Contractor's P.O. No. \_\_\_\_\_  
 Representative \_\_\_\_\_

## HydroGuard® Series e420 – Thermostatic Mixing Valves Model e423 (3-port)

### Description

Exposed thermostatic water mixing valve for use on shower and other installations. Powerful advanced thermal actuator compensates for both temperature and pressure fluctuations. A built-in adjustable temperature limit stop reduces chances of accidental scalding due to over adjustment of handle. Heavy cast-brass body, polish chrome-plated, lever-type handle and corrosion-resistant material ensure years of trouble-free service. See reverse for complete specification codes for valve and additional accessories.



**Model e423320**

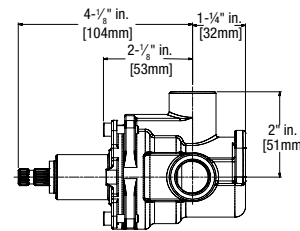
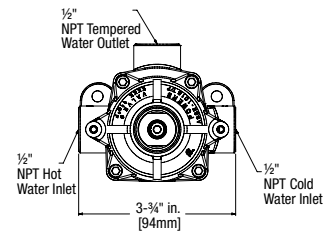
### Specifications

|   |  |
|---|--|
| <b>Connections</b>                          |  |
| Type e423                                   | 1/2" NPT Inlets and<br>1/2" NPT Top Outlet   |
| <b>Capacity (without checkstops)</b>        | 5.25 gpm [19.9 L/min]*<br>(±0.25 gpm [0.95 L/min])                                 |
| <b>Maximum Hot Water Supply Temperature</b> | 190°F (88°C)   |
| <b>Minimum Hot Water Supply Temperature</b> | 5°F (14°C) Above Set Point<br>(not applicable to low temperature hot water valves) |
| <b>Maximum Operating Pressure</b>           | 125 psig [862 kPa]   |
| <b>Temperature Ranges:</b>                  |  |
| ASSE 1016 Type T                            | 65 – 115°F (18 – 46°C)   |
| ASSE 1016 Type T/P                          | 90 – 110°F (32 – 43°C)   |
| <b>Temperature Limit Stop</b>               | Adjustable* (factory set at<br>110°F [43°C])                                       |
| <b>Maximum Static Pressure</b>              | 125 psig [862 kPa]   |
| <b>Certification</b>                        | CSA B125   |
| <b>Compliance</b>                           | ASSE 1016 T/P  |
| <b>Shipping Weight</b>                      | 5 lbs. [2.3 kg]  |

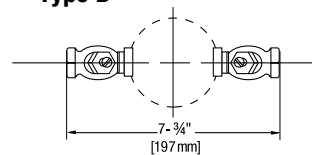
All HydroGuard® Series e420 thermostatic mixing valves meet above performance specifications based on typical operating conditions as stated in ASSE 1016 (45 psi pressure differential, hot water supply between 140°–180°F [60–82°C], cold water supply less than 70°F [21°C]). If your operating conditions vary from those stated in the standard, performance may vary as well. Consult your local sales representative or a Powers factory engineer to discuss your specific application. All Powers thermostatic mixing valves perform to the requirements of standards ASSE 1016 T/P and CSA B125.  
 \* At 45 psi differential [310 kPa], with hot water supply between 140°–180°F [60–82°C]. 50/50 mix.

### Dimensions

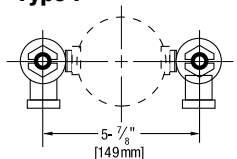
#### e423



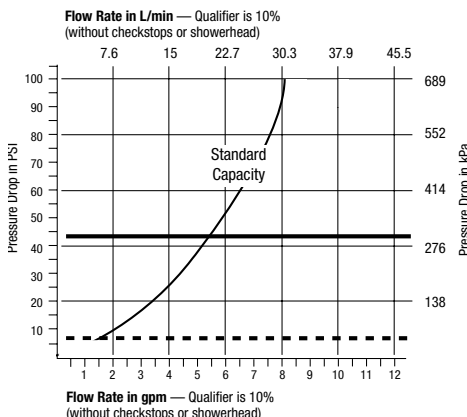
#### Type B



#### Type F



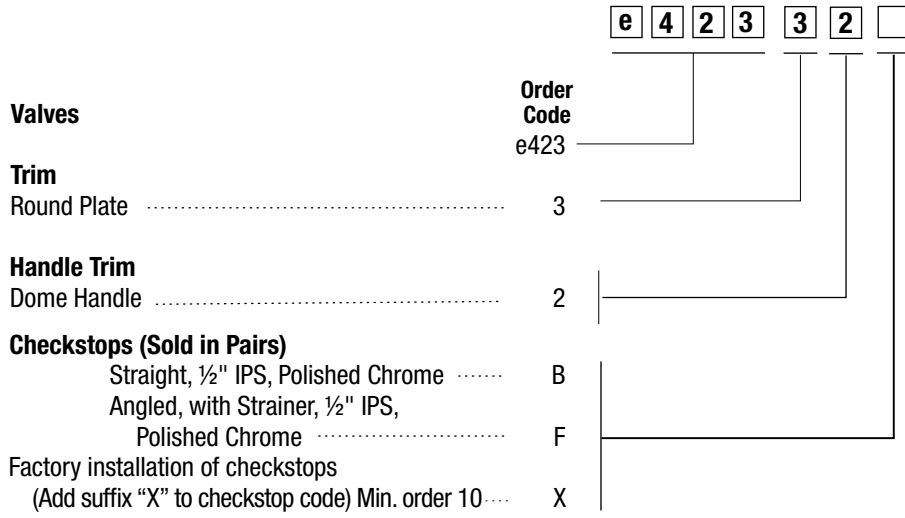
### Flow Rate Curves & Checkstops



Powers product specifications in U.S. customary units and metric are approximate and are provided for reference only. For precise measurements, please contact Powers Technical Service. Powers reserves the right to change or modify product design, construction, specifications, or materials without prior notice and without incurring any obligation to make such changes and modifications on Powers products previously or subsequently sold.

**POWERS™**  
 A WATTS Brand

# How To Specify: Type e423 Valve



**POWERS™**

*A WATTS Brand*

USA: Tel: (800) 669-5430 • Fax: (847) 229-0526 • PowersControls.com  
 Canada: Tel: (905) 332-4090 • Fax: (905) 332-7068 • PowersControls.ca  
 Latin America: Tel: (52) 81-1001-8600 • PowersControls.com