

Job Name \_\_\_\_\_

Contractor \_\_\_\_\_

Job Location \_\_\_\_\_

Approval \_\_\_\_\_

Engineer \_\_\_\_\_

Contractor's P.O. No. \_\_\_\_\_

Approval \_\_\_\_\_

Representative \_\_\_\_\_

## Series FPP, FFF

### Flanged & Plain Check Valves

Sizes: 3" – 10" (80 – 250mm)

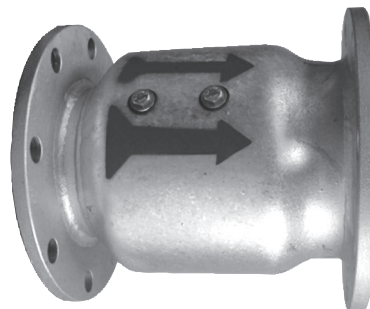
Series FPP (Plain) and FFF (Flanged) check valves are designed to permit free flow in one direction and to prevent return flow in the opposite direction. The unique design of the Ames "Spring-Swing" check valve enables it to function with an extremely high degree of efficiency. This efficiency is evidenced in the extremely rapid tight-sealing action of the flapper against the valve seat and in the remarkably low resistance to flow through the valve at full flow.

#### Features

- Flapper closed by spring action
- Minimum resistance to flow
- No noisy hammering
- Positive-sealing flapper
- Operates in any position
- Easy to inspect and maintain
- Sturdy construction
- Low in cost
- Individually tested before shipping

#### Specifications

A check valve shall be installed where indicated on the plans or as otherwise specified. The valve body shall be formed welded galvanized steel to eliminate sand pits and blow holes. All working parts shall be stainless steel, except rubber bonded plate. Valve shall be rated at 150 psi (10.3 bar). The check valve shall be an Ames Fire & Waterworks Series FPP (plain ends) or FFF (flanged ends).



FFF



FPP

#### Pressure – Temperature

Maximum Working Pressure: 150 psi (10.3 bar)

Temperature Range: 33°F – 110°F  
(0.5°C – 43°C)

#### Materials

Body: galvanized steel

Spring: stainless steel

All Working Parts: stainless steel

#### NOTICE

The information contained herein is not intended to replace the full product installation and safety information available or the experience of a trained product installer. You are required to thoroughly read all installation instructions and product safety information before beginning the installation of this product.

Ames Fire & Waterworks product specifications in U.S. customary units and metric are approximate and are provided for reference only. For precise measurements, please contact Ames Fire & Waterworks Technical Service. Ames Fire & Waterworks reserves the right to change or modify product design, construction, specifications, or materials without prior notice and without incurring any obligation to make such changes and modifications on Ames Fire & Waterworks products previously or subsequently sold.

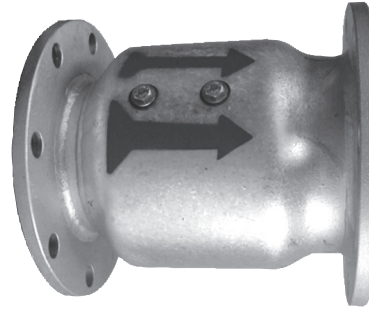


# Dimensions – Weights



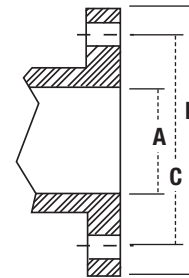
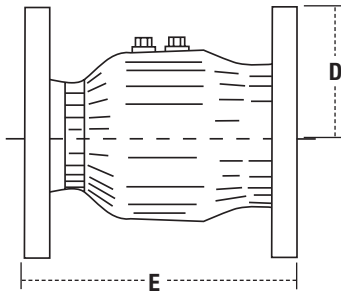
**FPP**

Size		Weight	
in.	mm	lb.	kg.
3	76	7	3.2
4	102	10	4.5
5	127	15	6.8
6	152	15	6.8
8	203	24	10.9
10	254	41	19



**FFF**

Size		Weight	
in.	mm	lb.	kg.
3	76	16	7.3
4	102	23	10.4
5	127	27	12.2
6	152	33	15
8	203	49	22.2
10	254	76	34.5
12	305	98	44.5



Size		Flange Dimensions and Drillings						General Dimensions				Number of Bolts	Diameter of Bolts	
in.	mm	A		B		C		D		E			in.	mm
3	76	3	76	7 1/2	191	6	152	3 3/4	95	7 3/4	197	4	5/8	15.9
4	102	4	102	9	229	7 1/2	191	4 1/2	114	10 9/16	259	8	5/8	15.9
5	127	5	127	10	254	8 1/2	216	5	127	11 7/8	302	8	3/4	19.1
6	152	6	152	11	279	9 1/2	241	5 1/2	140	10 7/8	276	8	3/4	19.1
8	203	8	203	13 1/2	343	11 3/4	299	6 3/4	172	14	356	8	3/4	19.1
10	254	10	254	16	406	14 1/4	362	8	203	16 3/8	416	12	7/8	22.2

**IMPORTANT: Inquire with governing authorities for local installation requirements.**



**A WATTS Brand**

USA: Backflow Tel: (978) 689-6066 • Fax: (978) 975-8350 • AmesFireWater.com  
 USA: Control Valves Tel: (713) 943-0688 • Fax: (713) 944-9445 • AmesFireWater.com  
 Canada: Tel: (905) 332-4090 • Fax: (905) 332-7068 • AmesFireWater.ca  
 Latin America: Tel: (52) 81-1001-8600 • AmesFireWater.com